

Disney Parks Blog

presents:

Disney Paper Parks

Candlelight Processional at
Main Street, U.S.A. Train Station

designed by
Stephanie Jazmines
and Amy Young of



Walt Disney IMAGINEERING

#DisneyMagicMoments | #DisneyPaperParks



Disney Paper Parks

#DisneyMagicMoments | #DisneyPaperParks

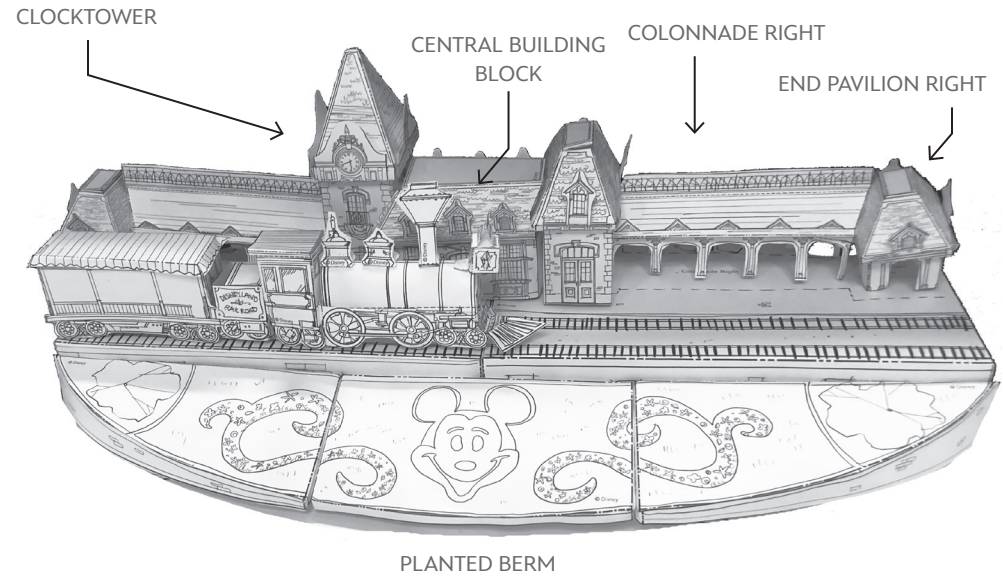
CANDLELIGHT PROCESSIONAL AT MAIN STREET, U.S.A. TRAIN STATION

Sheet Numbers: 1 - 18

HISTORY

The Candlelight Ceremony and Processional is one of the oldest and most beloved traditions in Disneyland® Park. From the first Holiday Festival in 1955, carolers and singers from various choirs have gathered to sing beloved songs and hymns in Town Square. 1958 was the first official Candlelight ceremony, comprised of 16 choirs and the Dickens singers. As the event grew larger, performances moved to the steps of the Main Street, U.S.A. train station. “The Living Christmas Tree” was later introduced, complete with orchestra, fanfare, bell choirs, trumpets, sign language interpreters, guest conductors, and celebrity narrators.

INSTRUCTIONS: TRAIN STATION



MATERIALS



Glue

Scissors



Tape



Paperclips



Crayons



Straws

GUIDE

Lines

- Valley fold, fold in front
- Mountain fold, fold behind
- Cut
- X-ray or guide line.

Arrows

- Fold in this direction.
- Fold behind.
- Unfold.
- Fold and unfold.
- Turn over.

1. Color the pages however you'd like!
2. Sheets 1 - 4: Start by building the base of the train station. Refer to the diagram above for overall construction.
3. Cut along solid lines and wherever indicated. Fold and glue each box as shown. When those pieces are finished, glue them together to make a stable surface.
4. Sheets 5 - 9: Cut along solid lines wherever indicated. Fold and glue each component and carefully follow the guidelines to attach the roof to the walls.
5. Sheet 10: Cut along solid lines, fold and glue where indicated. Glue sides to train platform.
6. Feel free to add the train station to the rest of Town Square as a backdrop for the Candlelight Processional!

Please Note: When cutting with scissors and working with any of the materials listed above, adult participation and supervision is recommended.

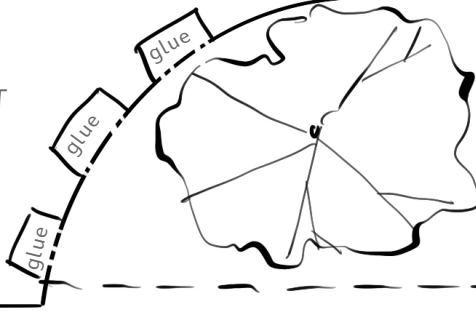


MAIN STREET, U.S.A. TRAIN STATION

Sheet Number: 1



TRAIN PLATFORM LEFT



glue

glue

glue

glue

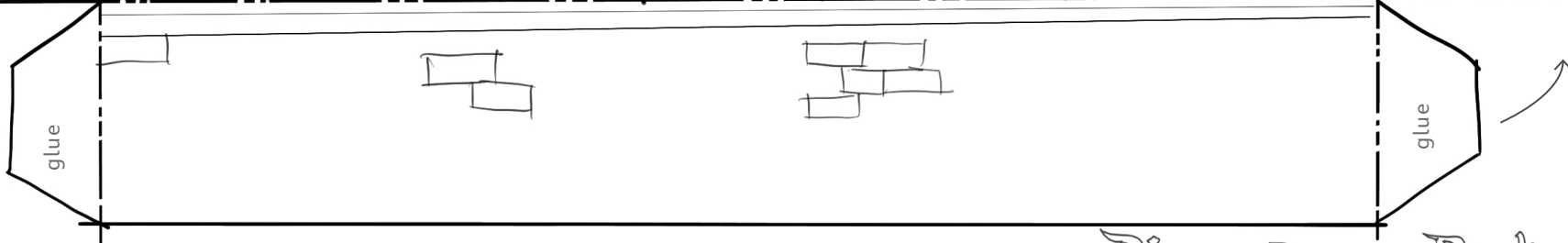
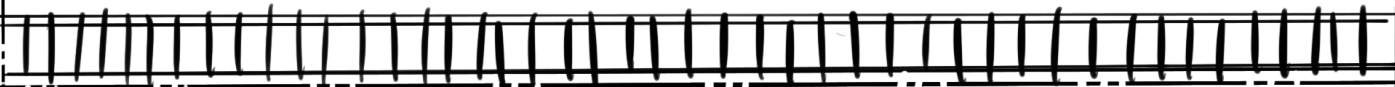
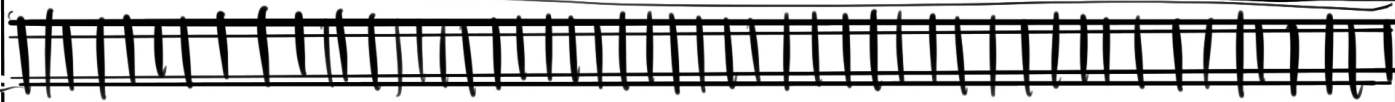
End Pavilion
Left

Colonnade Left

Left Tower

glue to Train
Platform Right

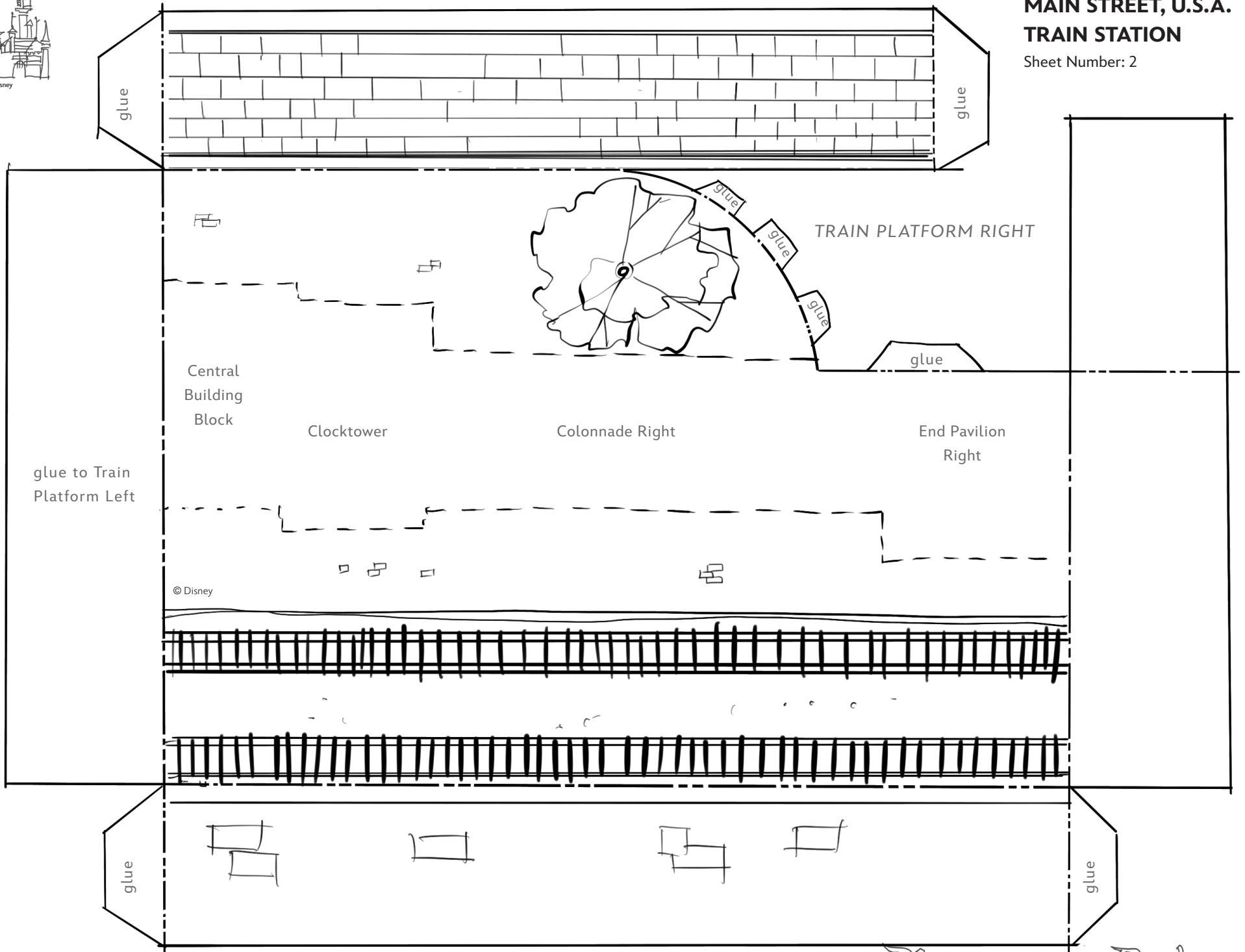
© Disney





MAIN STREET, U.S.A. TRAIN STATION

Sheet Number: 2





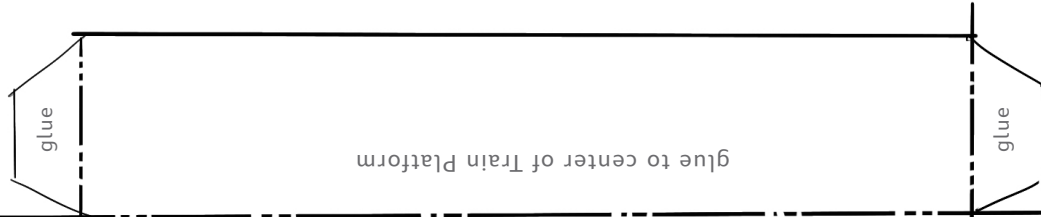
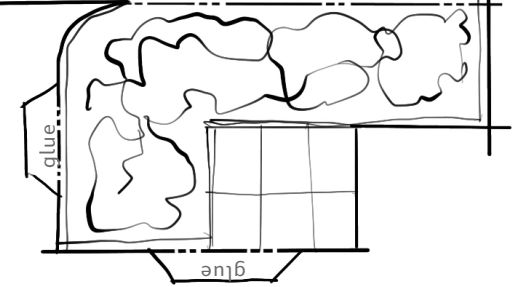
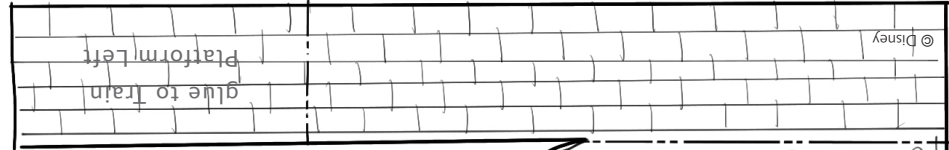
Disney Paper Parks

#DisneyMagicMoments | #DisneyPaperParks

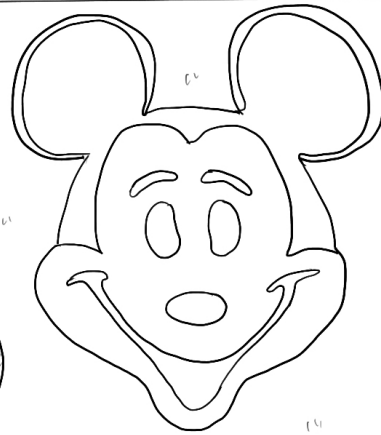
MAIN STREET, U.S.A. TRAIN STATION

Sheet Number: 3

TERRACE LEFT



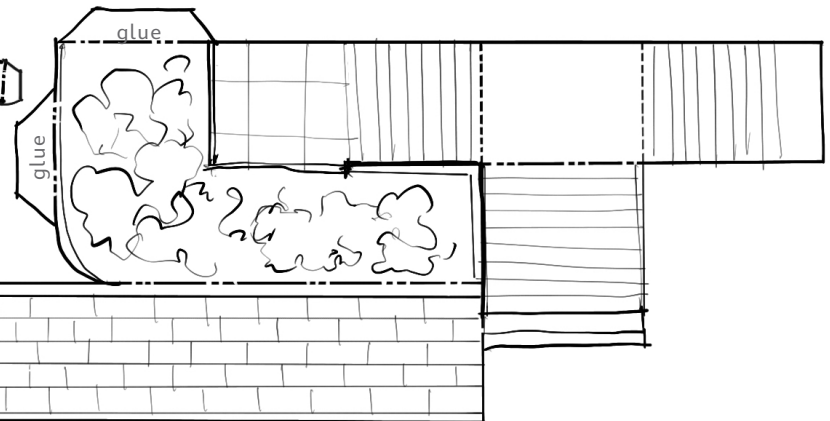
glue to Planted Berm Left



glue to Planted Berm Right

PLANTED BERM CENTER

TERRACE RIGHT



glue to Train
Platform Right

© Disney

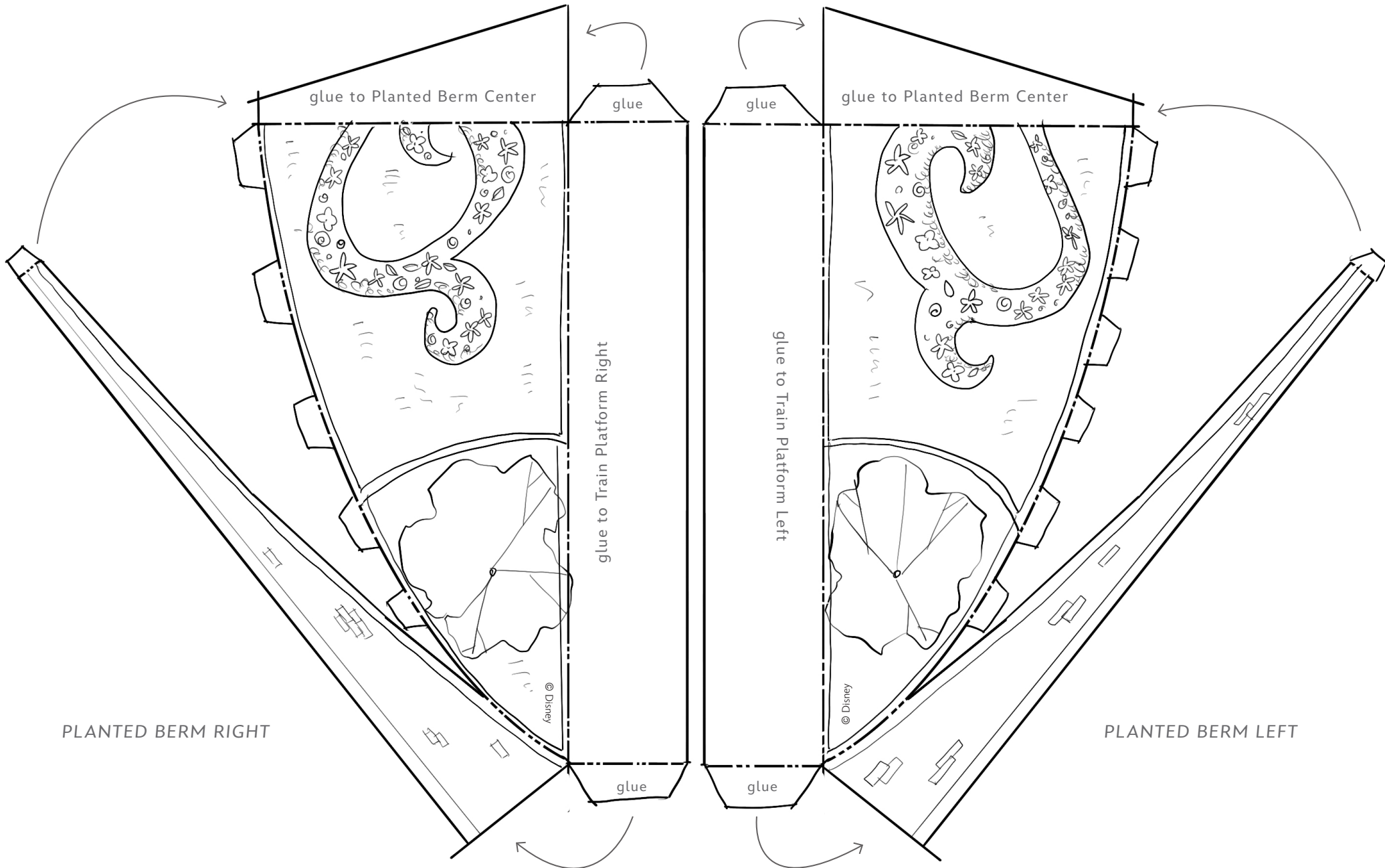


Disney Paper Parks

#DisneyMagicMoments | #DisneyPaperParks

MAIN STREET, U.S.A. TRAIN STATION

Sheet Number: 4



PLANTED BERM RIGHT

PLANTED BERM LEFT

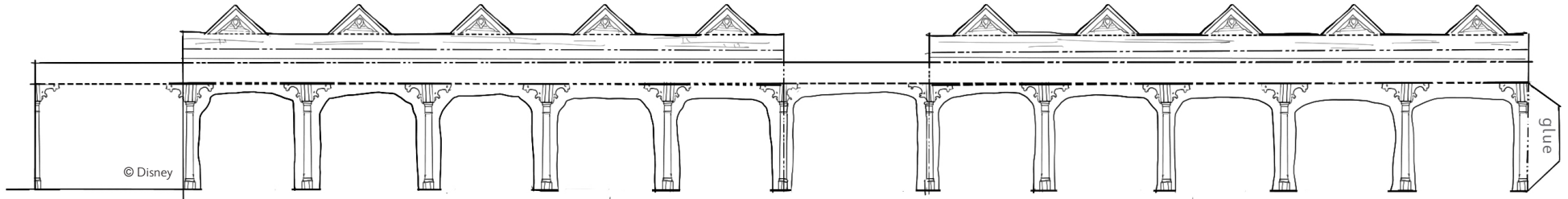


Disney Paper Parks

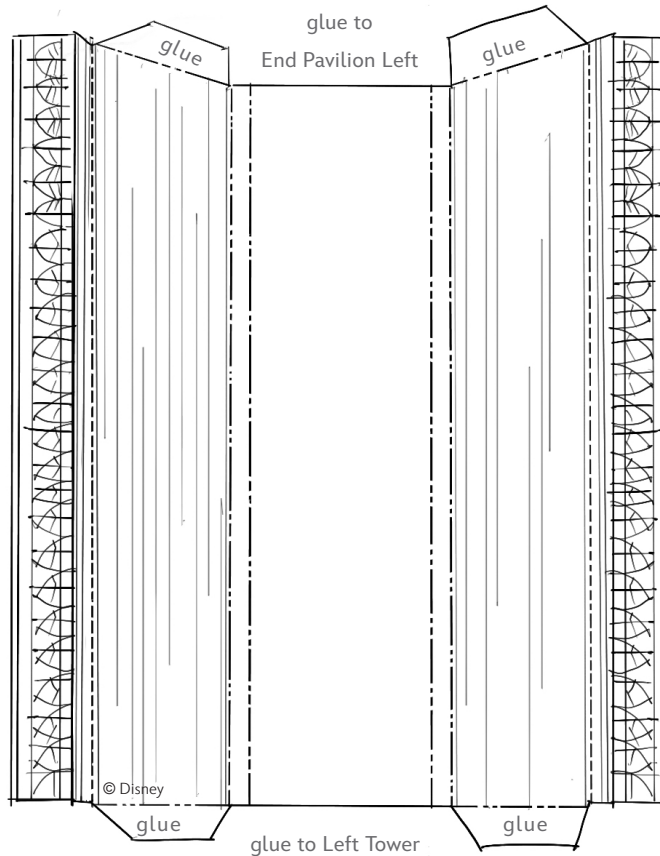
#DisneyMagicMoments | #DisneyPaperParks

MAIN STREET, U.S.A. TRAIN STATION

Sheet Number: 6



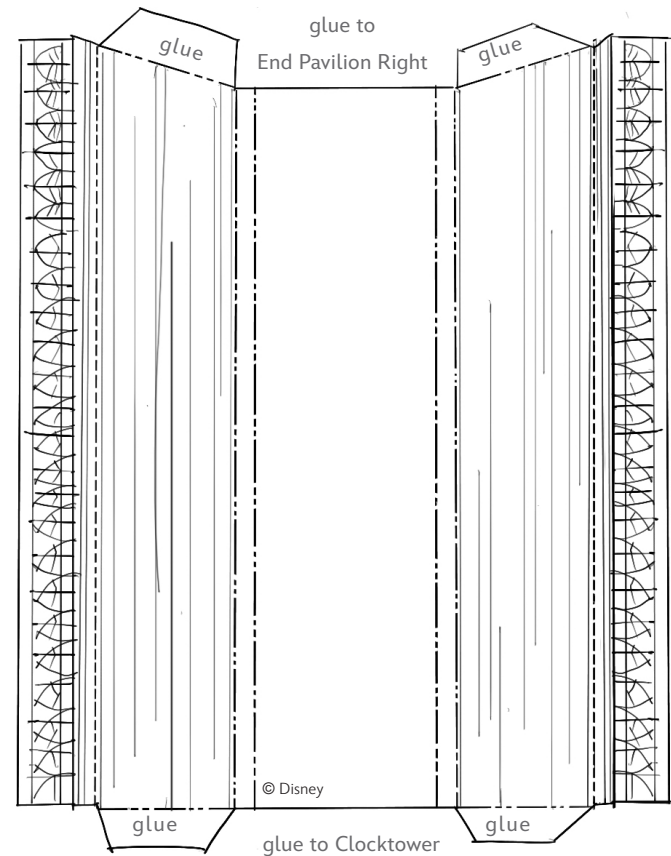
© Disney



COLONNADE LEFT

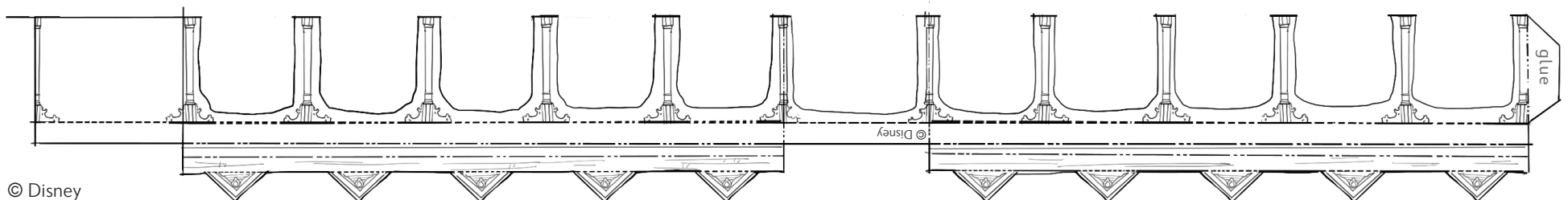
fold roof and glue crown piece together

© Disney



COLONNADE RIGHT

© Disney



© Disney

© Disney



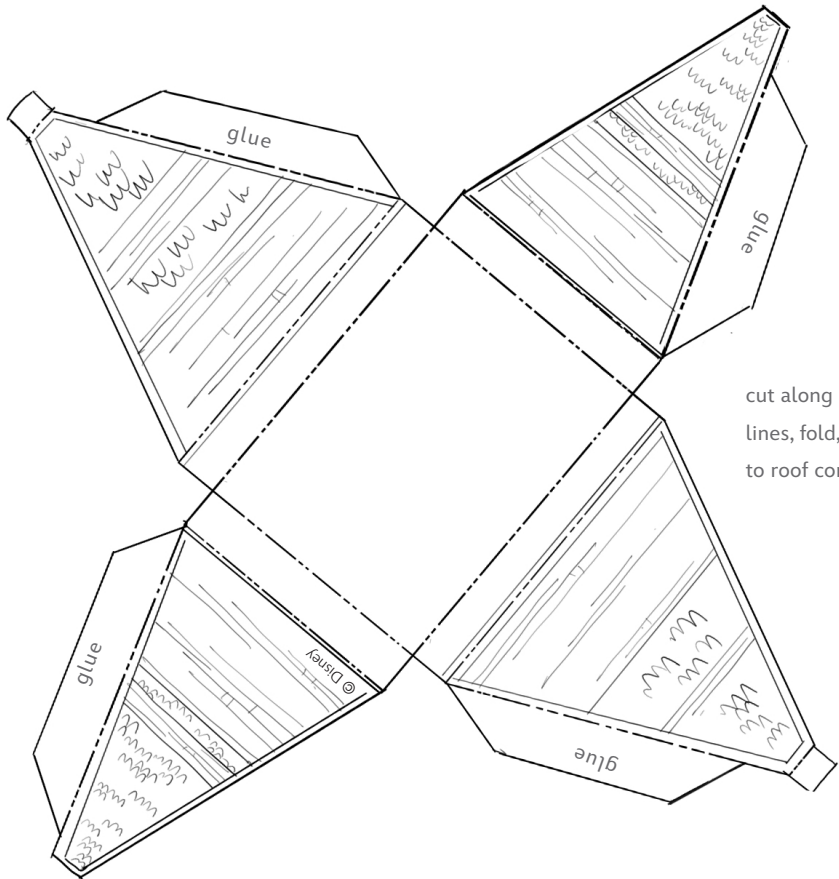
Disney Paper Parks

#DisneyMagicMoments | #DisneyPaperParks

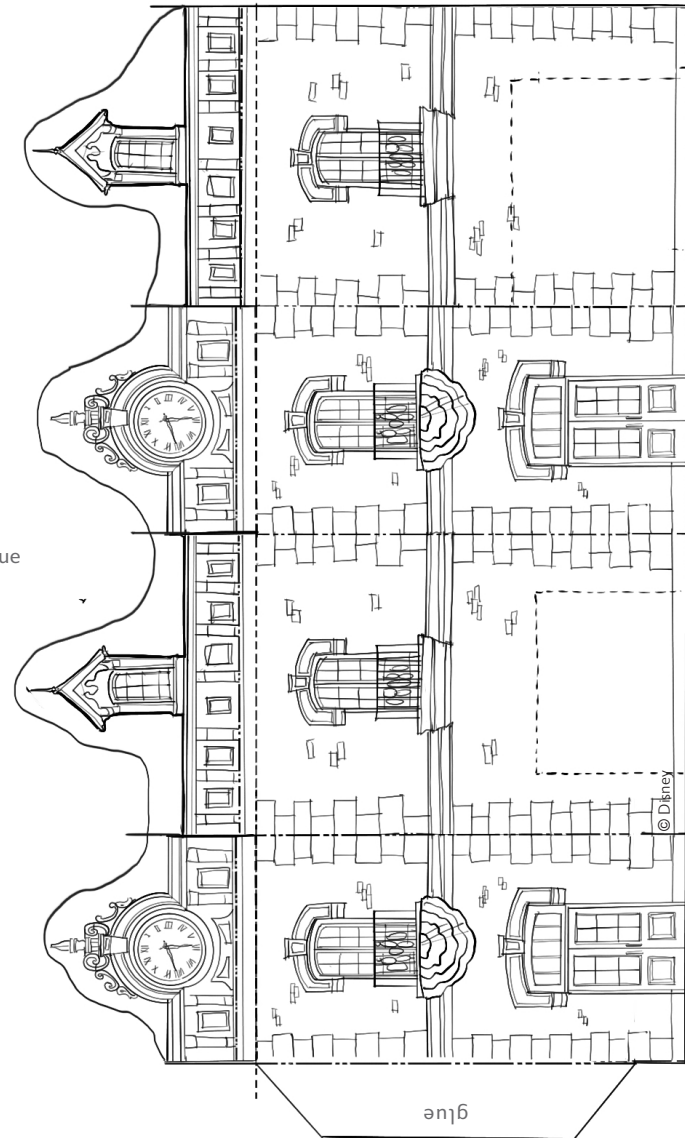
MAIN STREET, U.S.A. TRAIN STATION

Sheet Number: 7

CLOCKTOWER

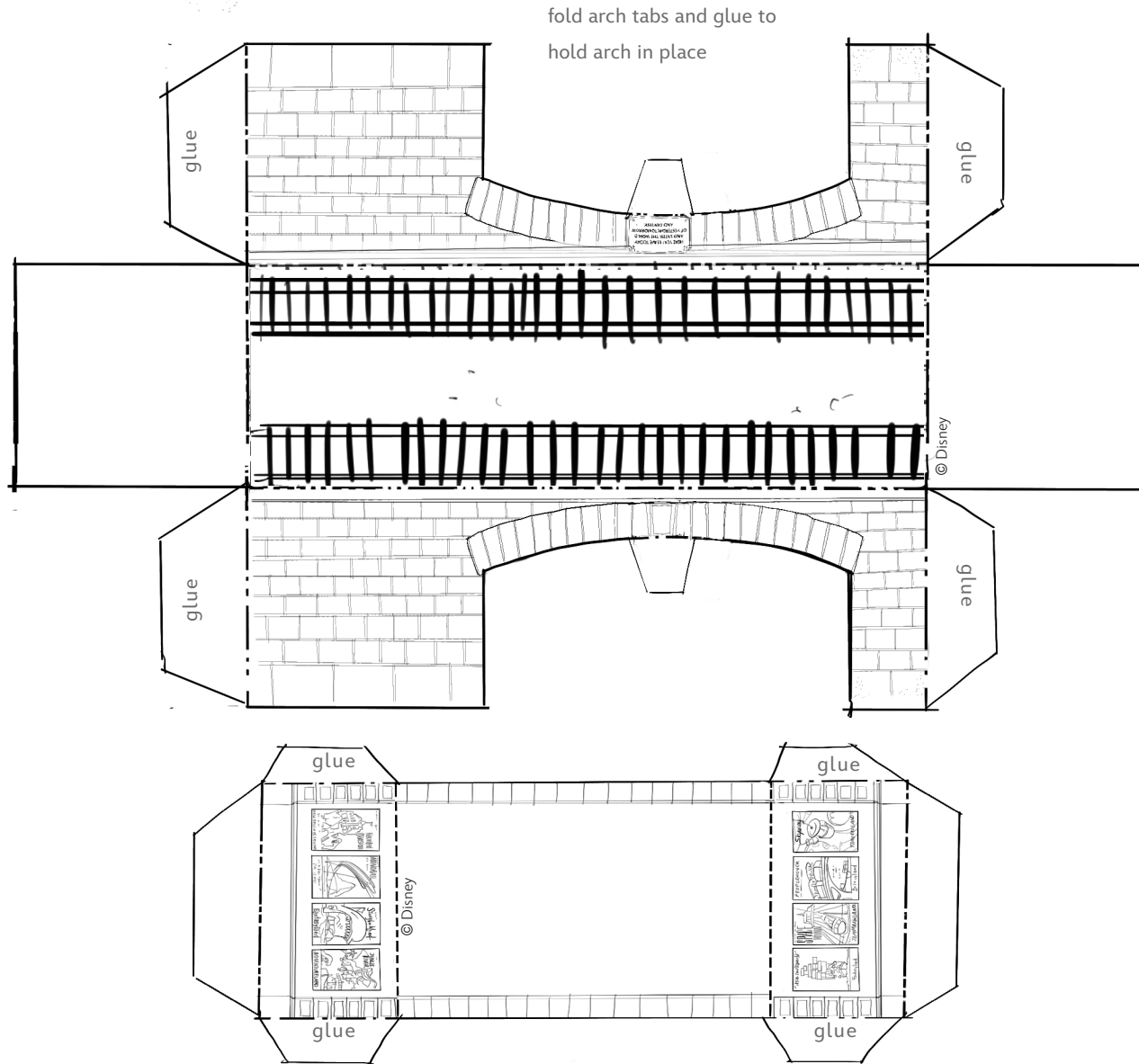


cut along solid lines, fold, and glue to roof cornice





RIGHT ARCHWAY



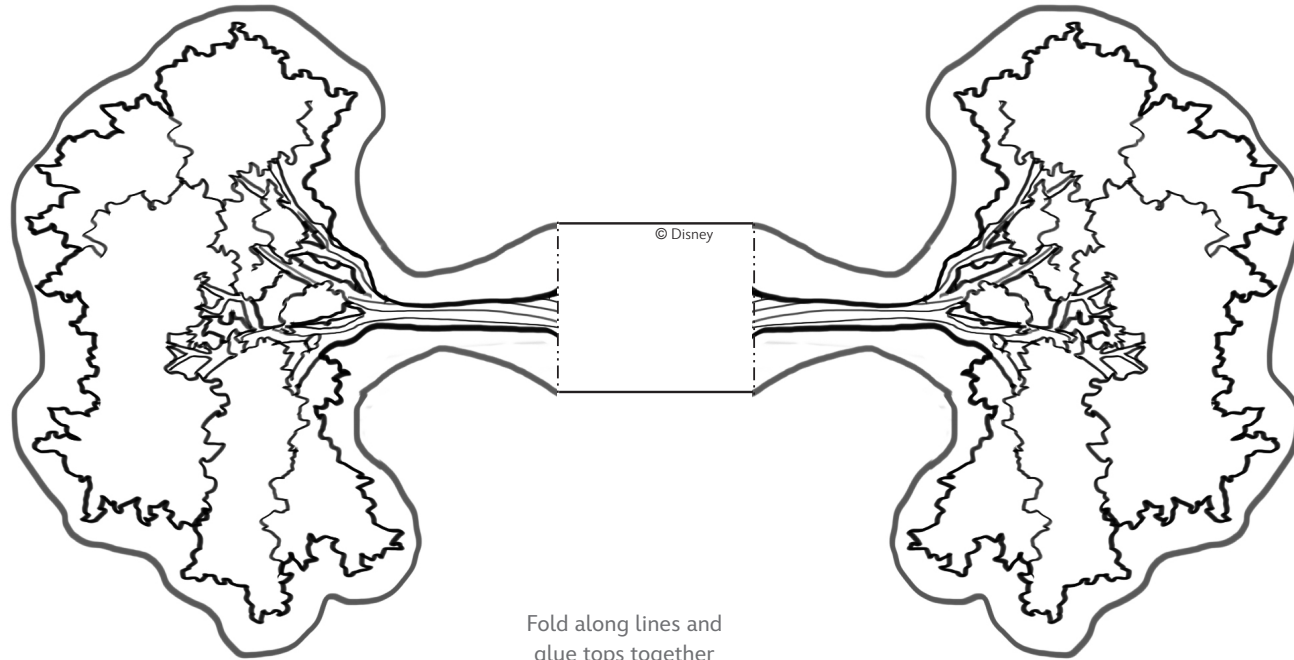


Disney Paper Parks

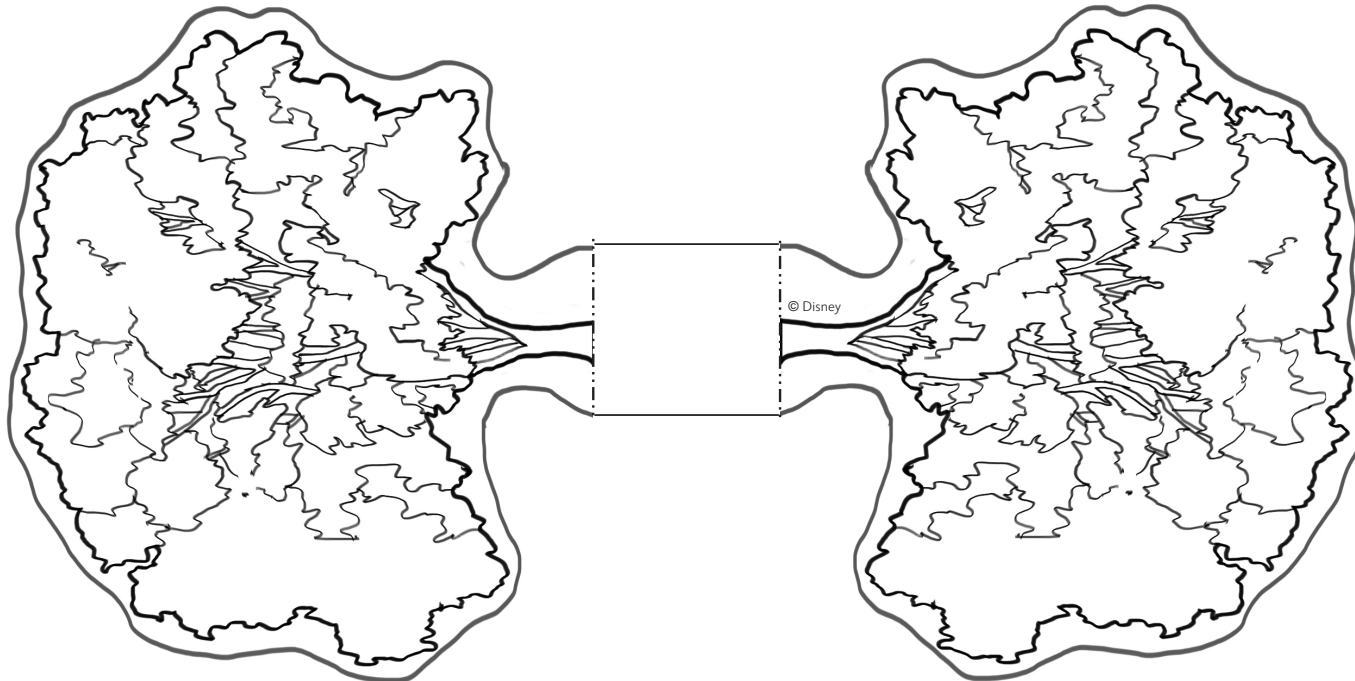
#DisneyMagicMoments | #DisneyPaperParks

TREES

Sheet Number: 12



Fold along lines and
glue tops together





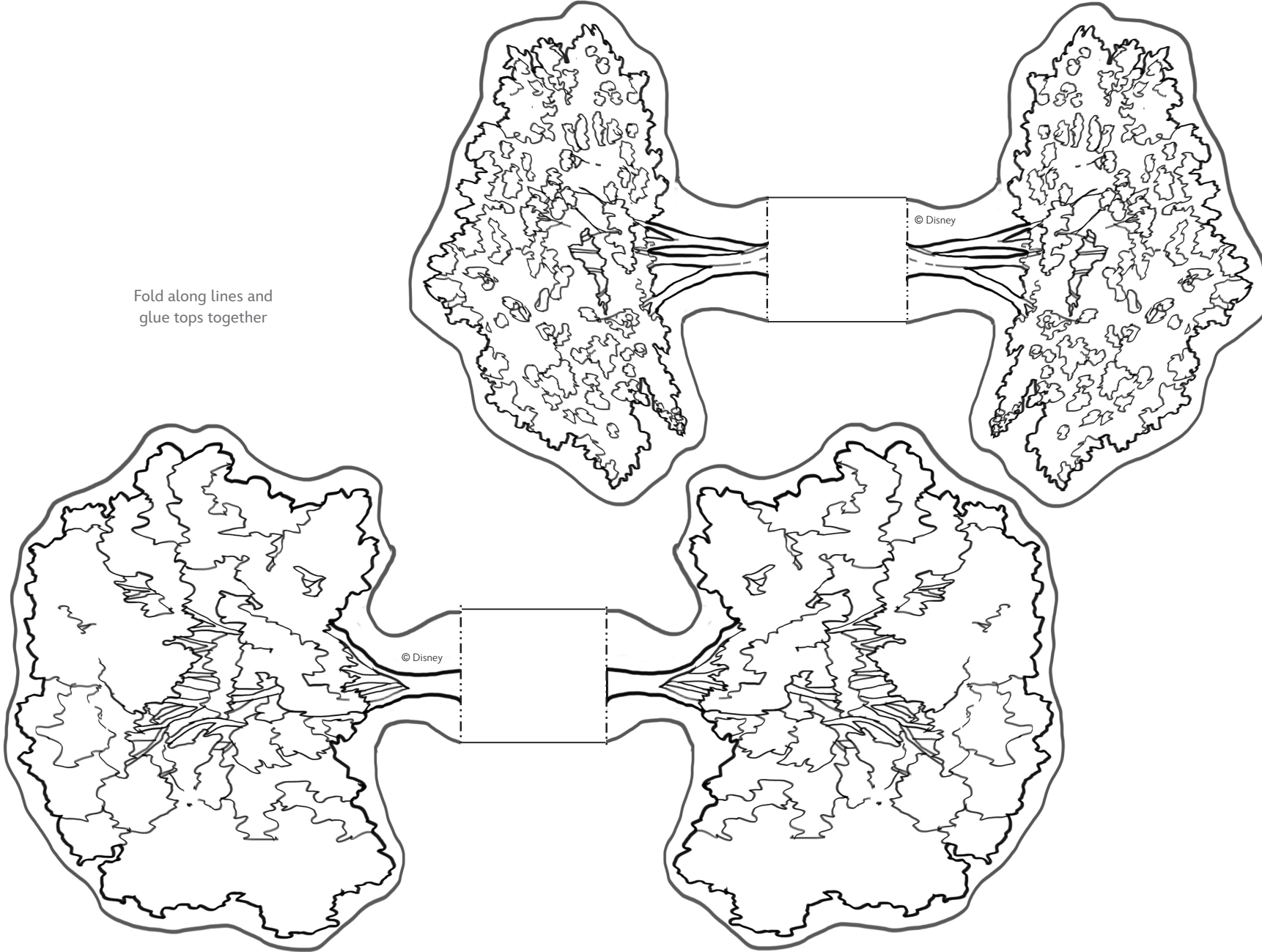
Disney Paper Parks

#DisneyMagicMoments | #DisneyPaperParks

TREES

Sheet Number: 13

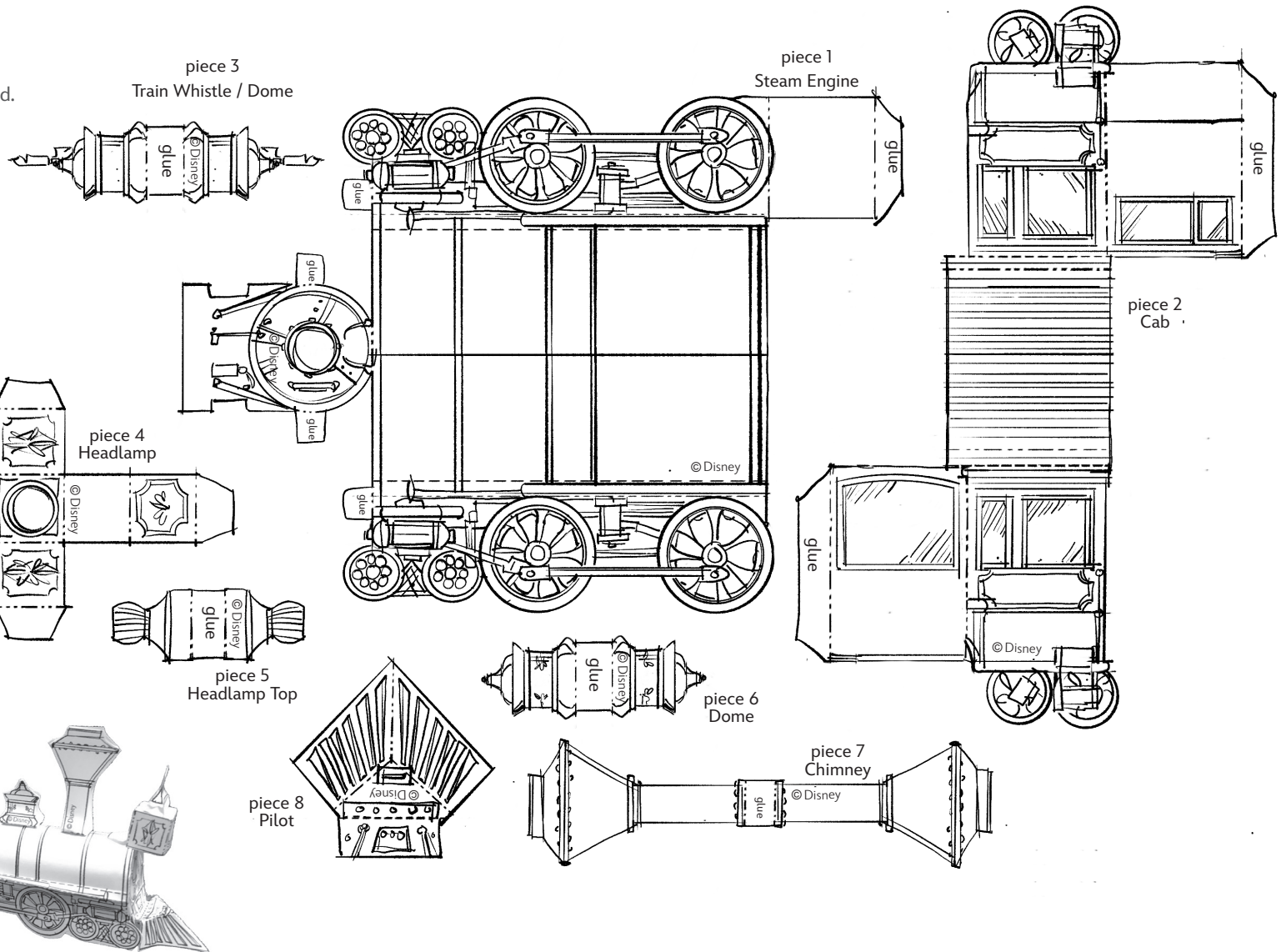
Fold along lines and
glue tops together





INSTRUCTIONS

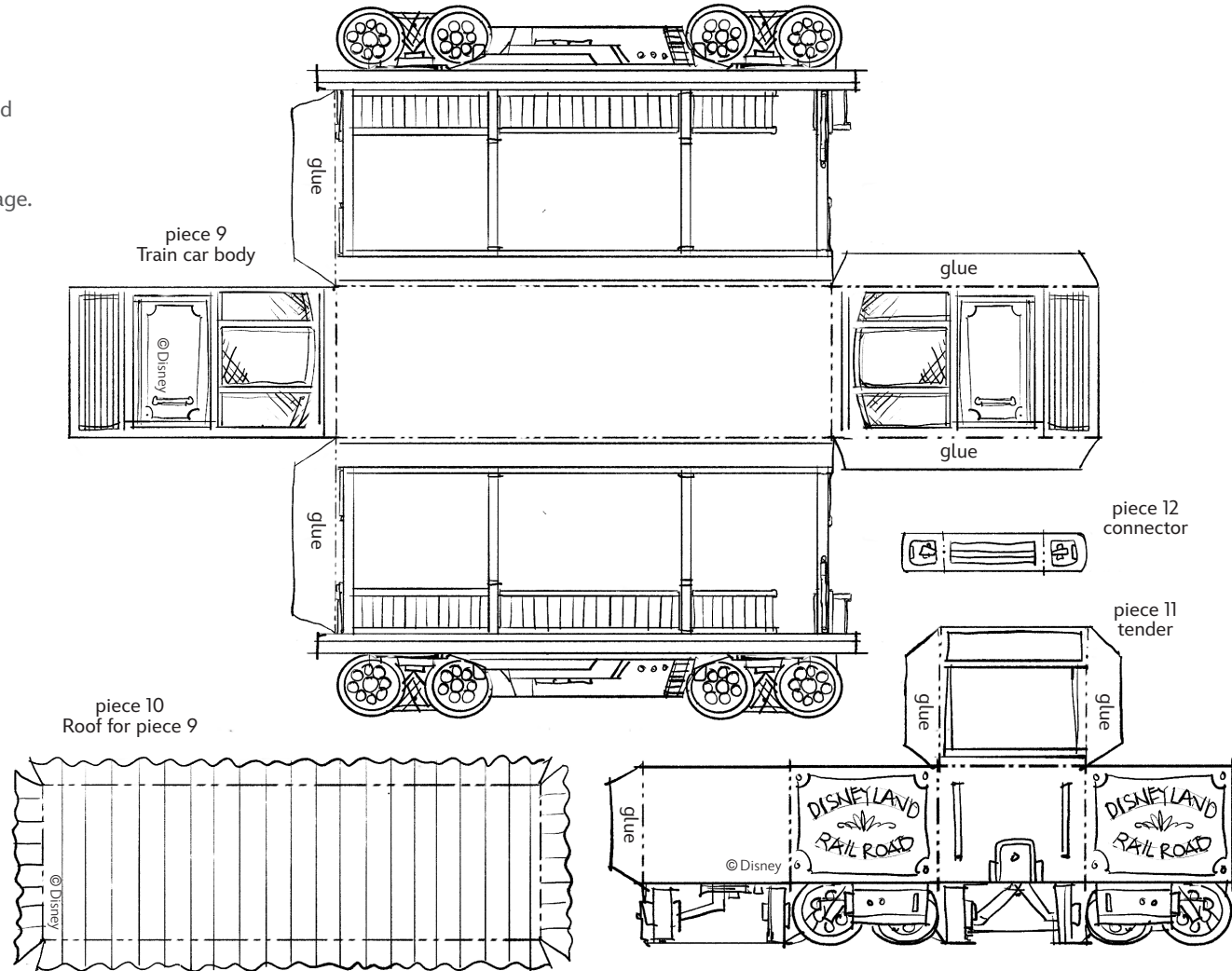
1. Color the pages with crayons, colored pencils, or whatever you would like to use.
2. Cut along solid lines where indicated.
3. Fold tabs and pieces according to Guide. And glue tabs as shown on images.
4. Attach tender car to back, (piece 11)
See image.





INSTRUCTIONS

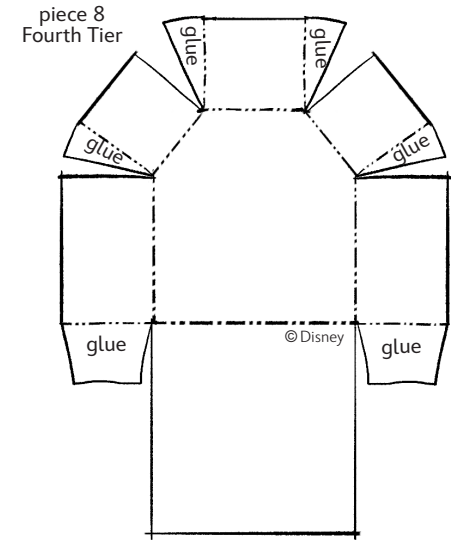
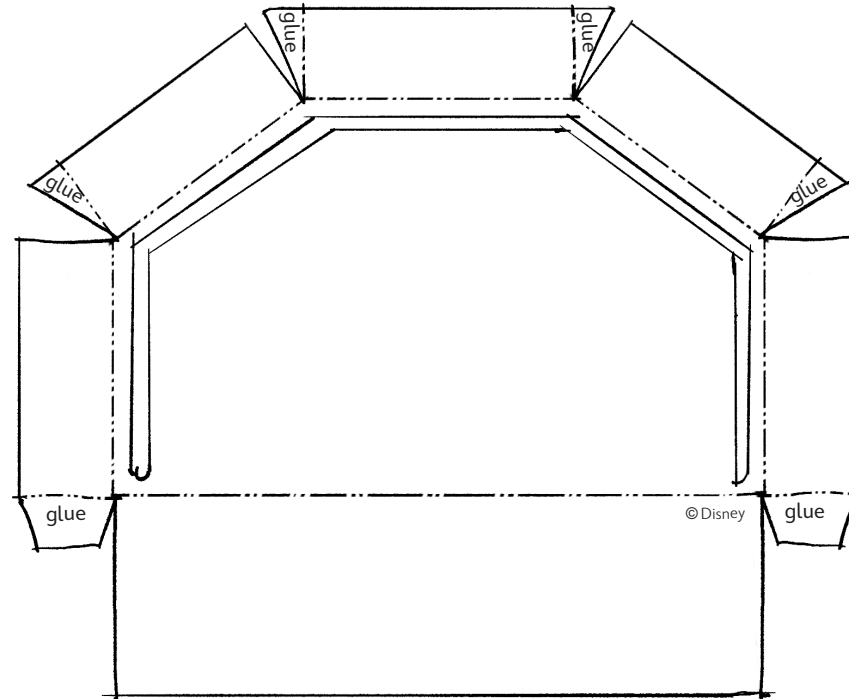
1. Color the pages with crayons, colored pencils, or whatever you would like to use.
2. Cut along solid lines where indicated.
3. Fold tabs and pieces according to Guide. And glue tabs as shown on images.
4. Attach tender car to back, (piece 11) See image.





INSTRUCTIONS

1. Color the pages with crayons, colored pencils, or whatever you would like to use.
2. Cut along solid lines where indicated.
3. Fold tabs and pieces according to Guide. And see notes on all pages.
4. Start with bottom base, (piece 9), and assemble from bottom to top.
5. Glue Carolers and railings to bases as shown in image.



piece 7
Second Tier



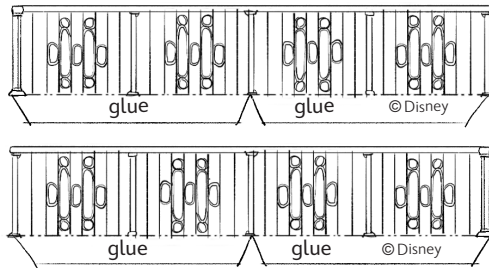
Disney Paper Parks

#DisneyMagicMoments | #DisneyPaperParks

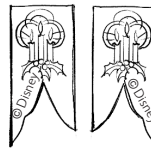
CANDLELIGHT PROCESSIONAL

Sheet Number: 17

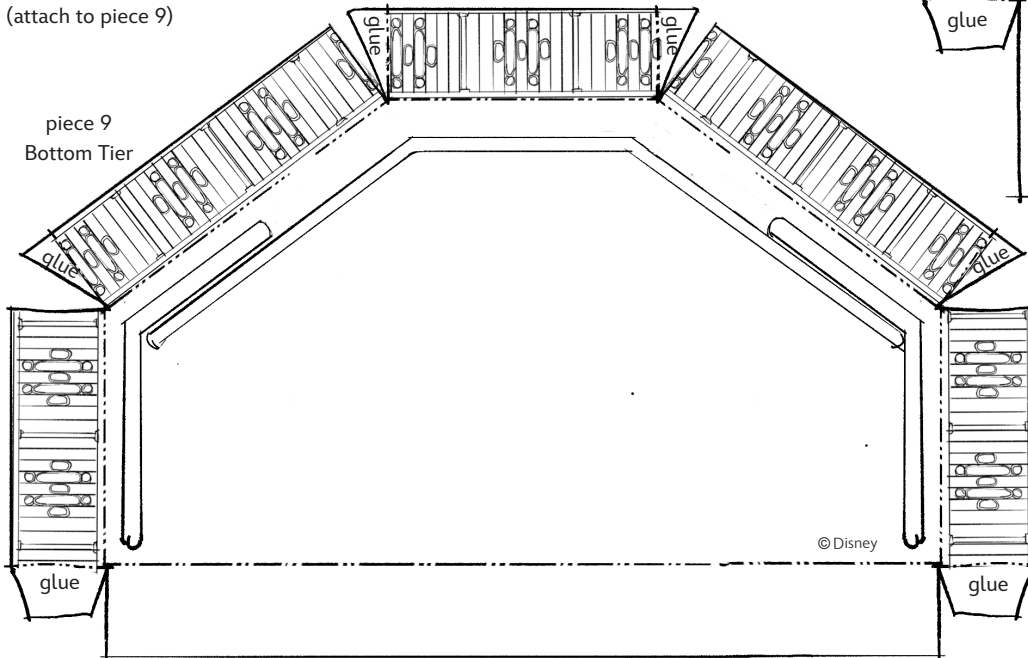
piece 11
Railing on right side
(attach to piece 9)



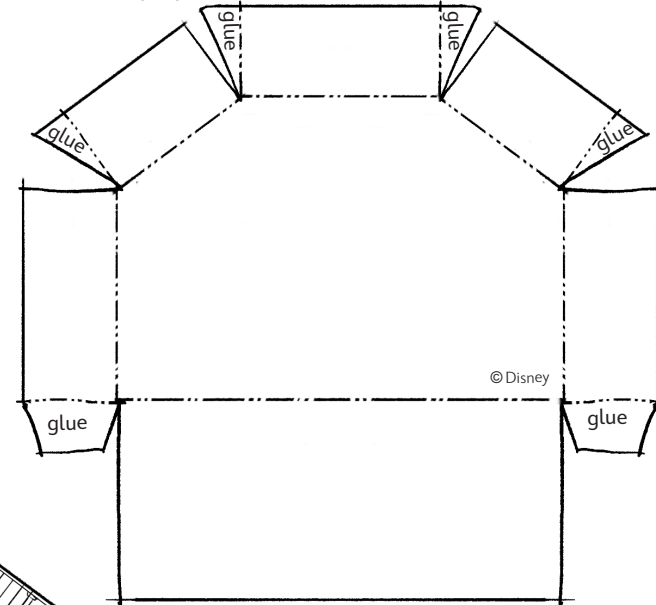
piece 13
2 Banners



piece 12
Railing on left side
(attach to piece 9)



piece 10
Third Tier





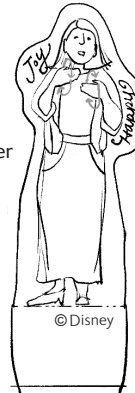
Disney Paper Parks

#DisneyMagicMoments | #DisneyPaperParks

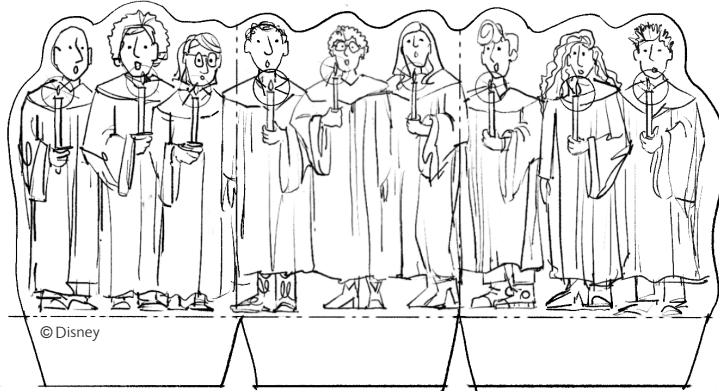
CANDLELIGHT PROCESSIONAL

Sheet Number: 18

piece 2
Interpreter



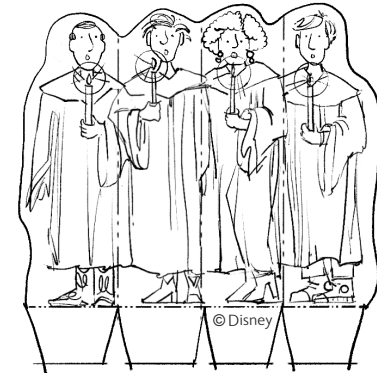
piece 3
Second Row



piece 1
Top Row and star

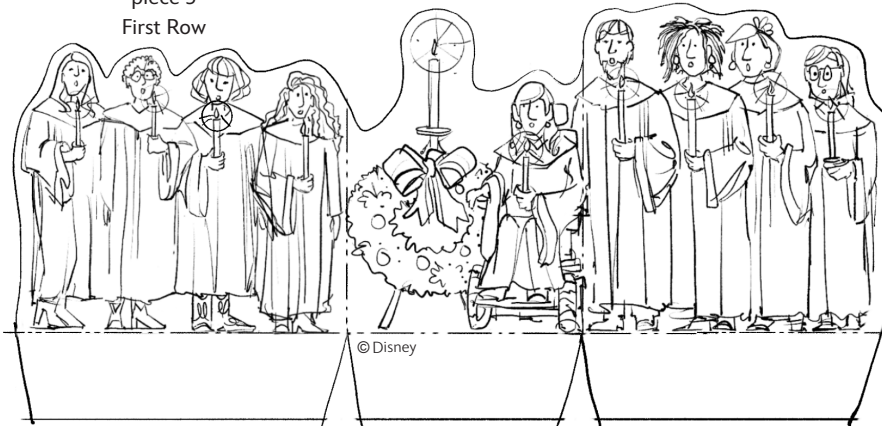


piece 4
Fourth Row



do not
fold here

piece 5
First Row



piece 6
Third Row

