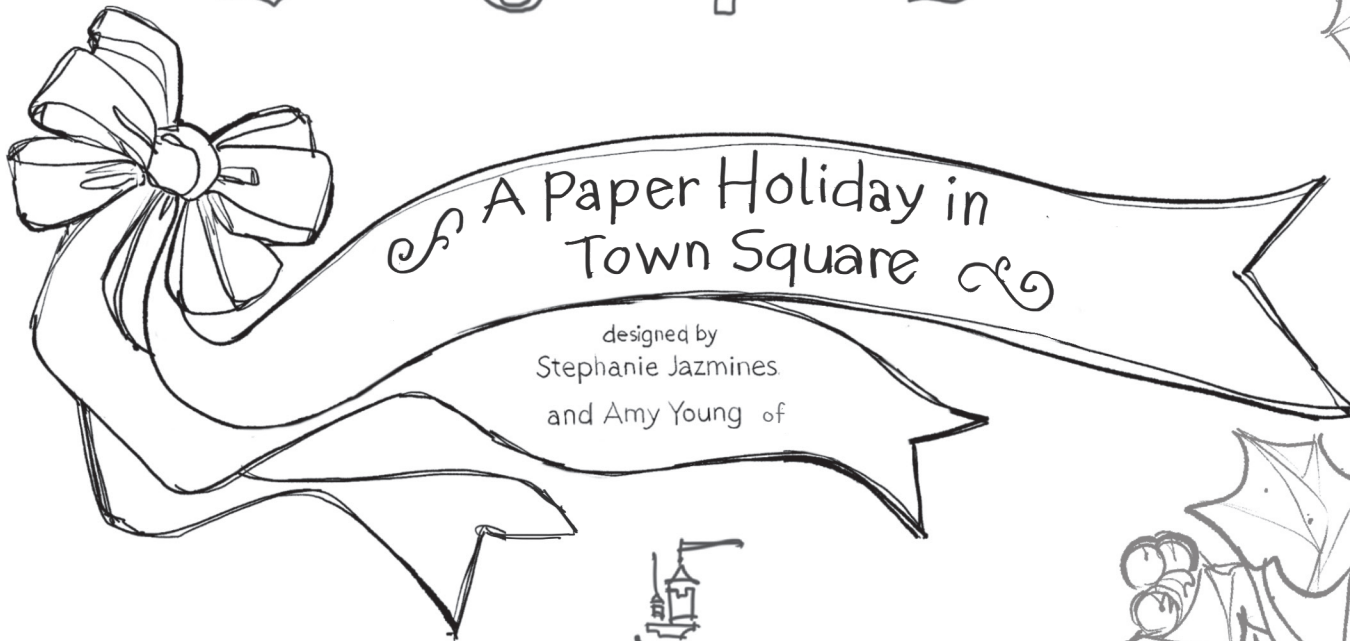


# Disney Parks Blog

presents:

## Disney Paper Parks



Walt Disney IMAGINEERING

#DisneyMagicMoments | #DisneyPaperParks



# Disney Paper Parks

#DisneyMagicMoments | #DisneyPaperParks

## DISNEYLAND TOWN SQUARE

Plan Sheet Numbers: A, B, C, D, E, F

Facade Sheet Numbers: 1, 2, 3, 4, 5, 6, 7, 8, 9, 10, 11, 12, 13, 14

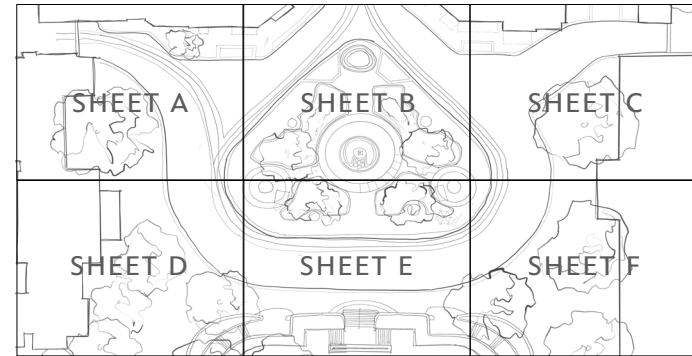
Holiday Decoration Sheet Numbers: 15, 16, 17, 18, 19, 20, 21, 22

### HISTORY

Located just past the Main Street, U.S.A. train station is Town Square in Disneyland® Park. Town Square is home to a number of notable buildings, including City Hall, the Opera House (which is also the oldest building in Disneyland), and the Fire Station (where Walt Disney kept his personal apartment). We invite you to complete your Disney Paper Parks Main Street, U.S.A. with Town Square and the holiday overlay!

During the holidays, the center of Town Square features a 60-foot-tall Christmas tree covered with more than 1,800 ornaments! Build your own tree and adorn your buildings with garlands and wreaths to bring the festivities into your own home.

### INSTRUCTIONS



### MATERIALS



Glue

Scissors



Tape



Paperclips



Crayons



Straws

### GUIDE

#### Lines

- Valley fold, fold in front
- - - - - Mountain fold, fold behind
- Cut
- ..... X-ray or guide line.

1. Color the pages however you'd like!
2. Cut along solid lines where indicated.
3. Lay out the plan sheets (A, B, C, D, E, F, G, H, I).
4. Fold pieces according to Guide.
5. Paper clip or glue the facade tabs together. You can attach the facades on sheet 1 and sheet 8 to their corresponding facades from Main Street I.
6. Place the elevations on the plan with the corresponding numbers to complete the model!

Please Note: When cutting with scissors and working with any of the materials listed above, adult participation and supervision is recommended.



© Disney

# DISNEYLAND TOWN SQUARE

Sheet Number: A

SHEET 3

SHEET 2

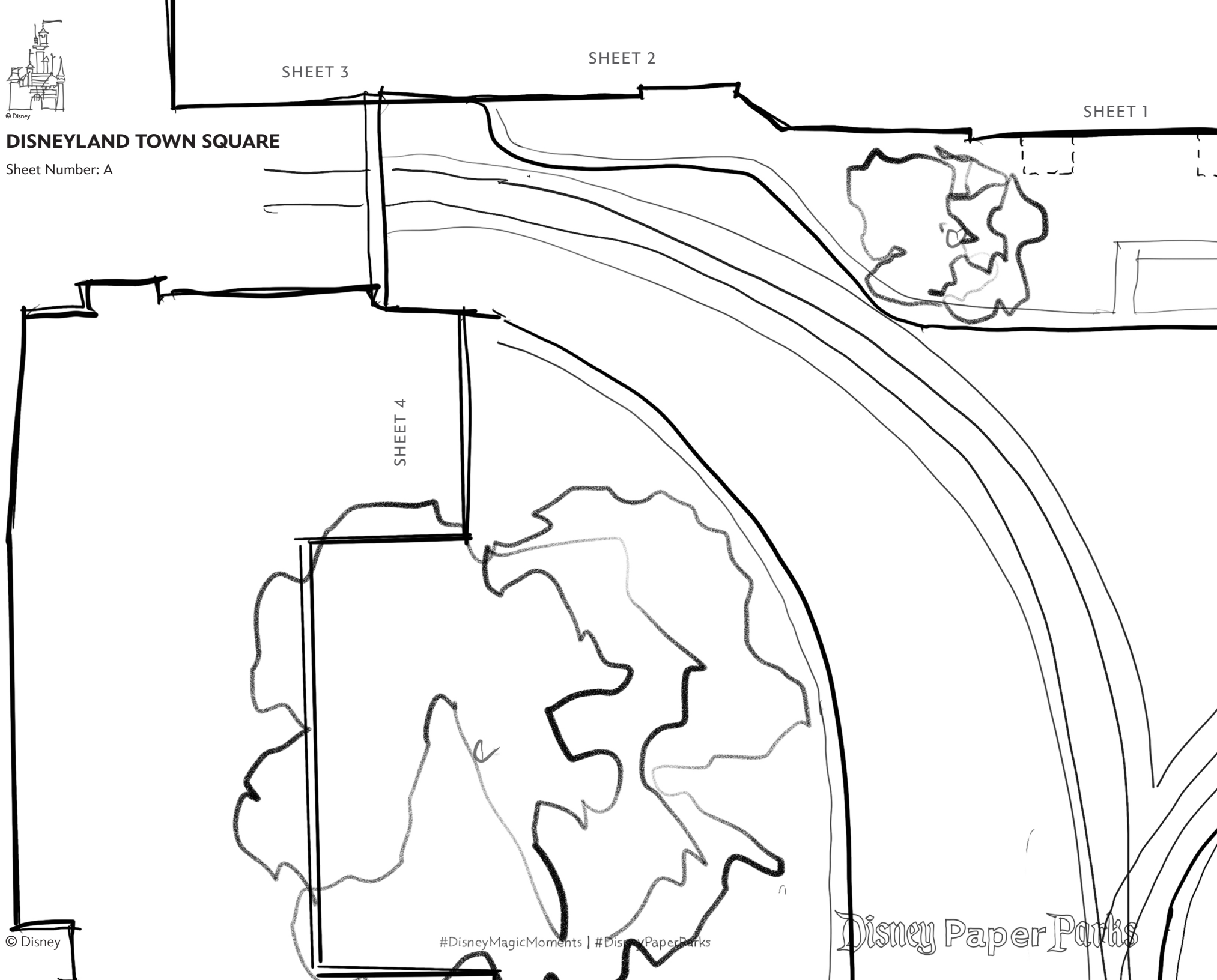
SHEET 1

SHEET 4

© Disney

#DisneyMagicMoments | #DisneyPaperParks

Disney Paper Parks





© Disney

SHEET 1

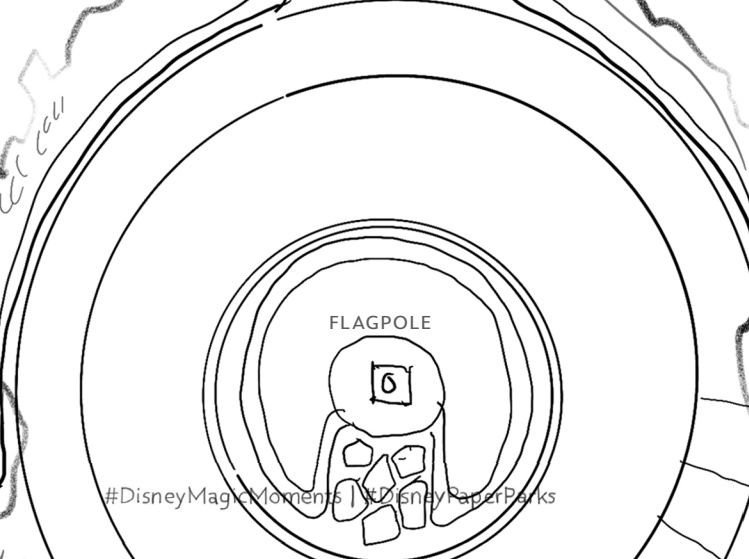
SHEET 8

# DISNEYLAND TOWN SQUARE

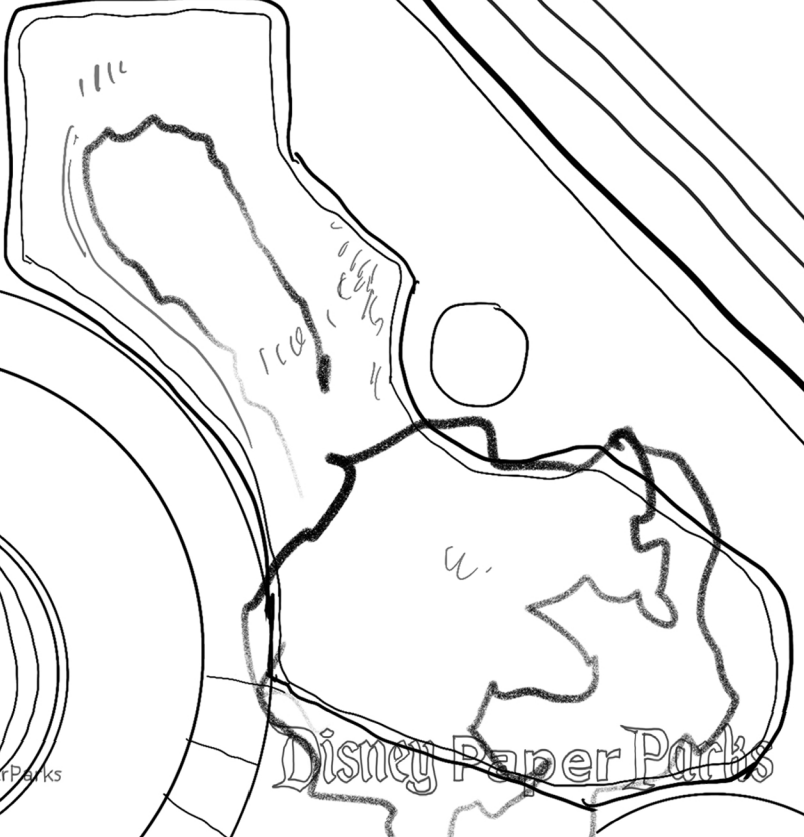
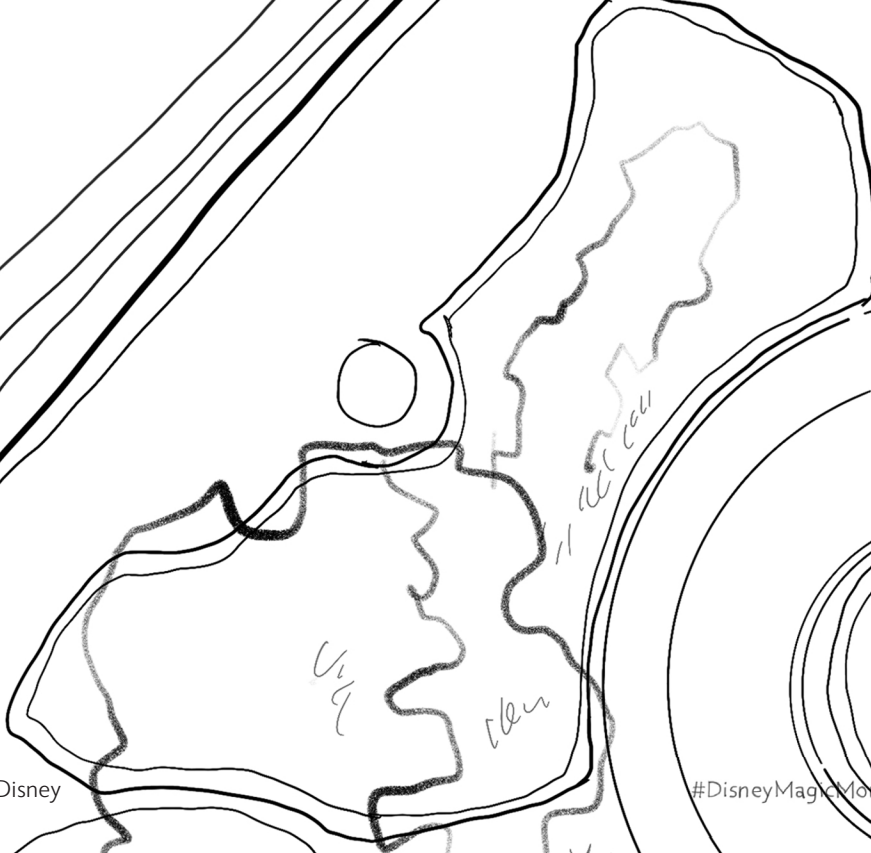
Sheet Number: B



CHRISTMAS  
TREE



FLAGPOLE



© Disney

#DisneyMagicMoments | #DisneyPaperParks

Disney Paper Parks



© Disney

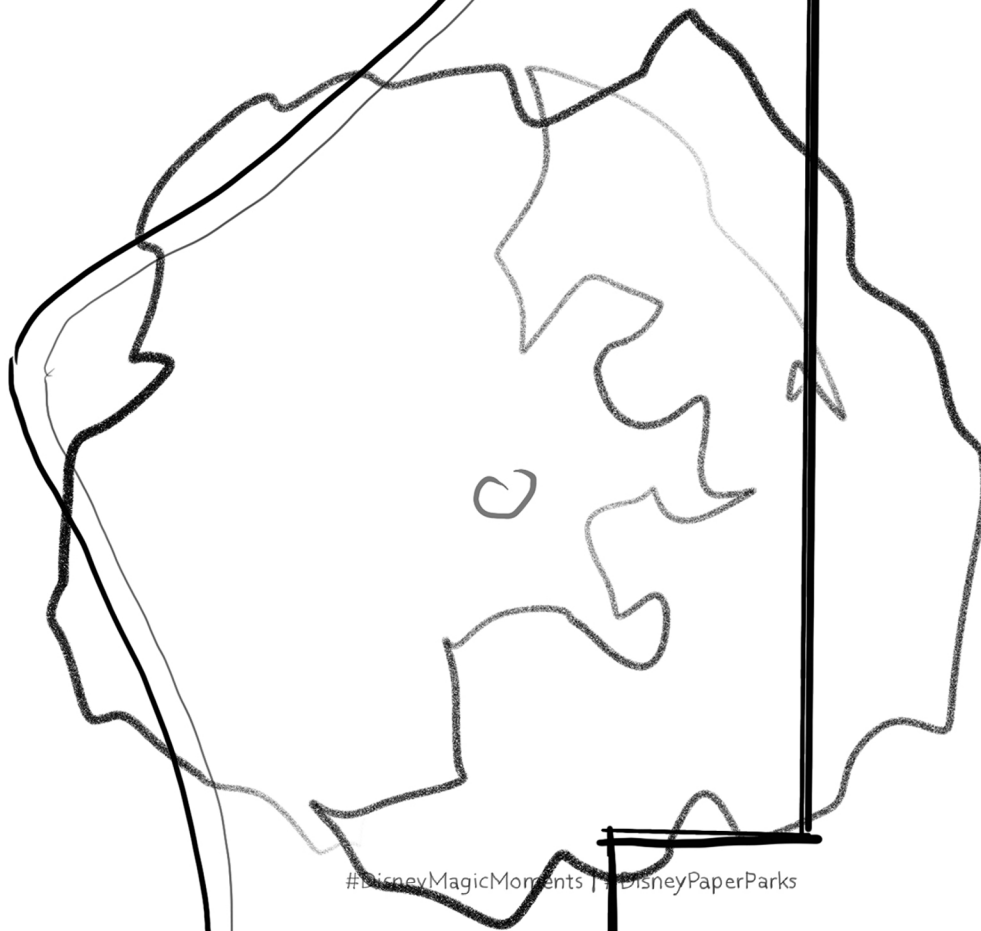
SHEET 9

SHEET 10

# DISNEYLAND TOWN SQUARE

Sheet Number: C

SHEET 11



© Disney

#DisneyMagicMoments | DisneyPaperParks

# Disney Paper Parks



© Disney

# DISNEYLAND TOWN SQUARE

Sheet Number: D

SHEET 6

SHEET 5

SHEET 7

© Disney

#DisneyMagicMoments | #DisneyPaperPark

Disney Paper Parks

© Disney

# DISNEYLAND TOWN SQUARE

Sheet Number: E

© Disney

#DisneyMagicMoments | #DisneyPaperParks

Disney Paper Parks

© Disney

# DISNEYLAND TOWN SQUARE

Sheet Number: F

SHEET 12

SHEET 13

© Disney

#DisneyMagicMoments | #DisneyPaperParks

Disney Paper Parks





# Disney Paper Parks

#DisneyMagicMoments | #DisneyPaperParks

## TOWN SQUARE - WEST

Sheet Number: 1



Glue or clip to Sheet 2 facade

Glue or tape to Emporium Facade  
in Main Street I

© Disney



# Disney Paper Parks

#DisneyMagicMoments | #DisneyPaperParks

## TOWN SQUARE - WEST

Sheet Number: 2





# Disney Paper Parks

#DisneyMagicMoments | #DisneyPaperParks

## DISNEYLAND TOWN SQUARE

Sheet Number: 3



Glue or clip to Sheet 4 facade

Glue or clip to Sheet 2 facade

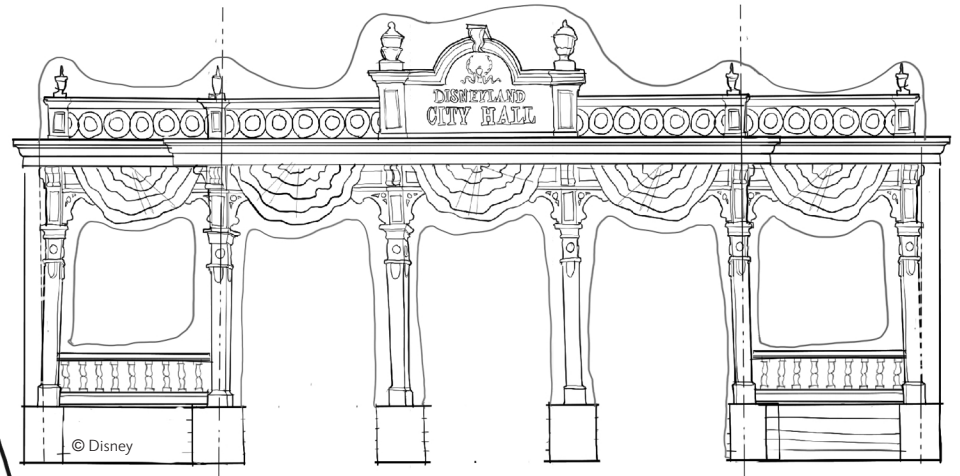


# Disney Paper Parks

#DisneyMagicMoments | #DisneyPaperParks

## TOWN SQUARE - WEST

Sheet Number: 4



Fold sides and glue to City Hall facade



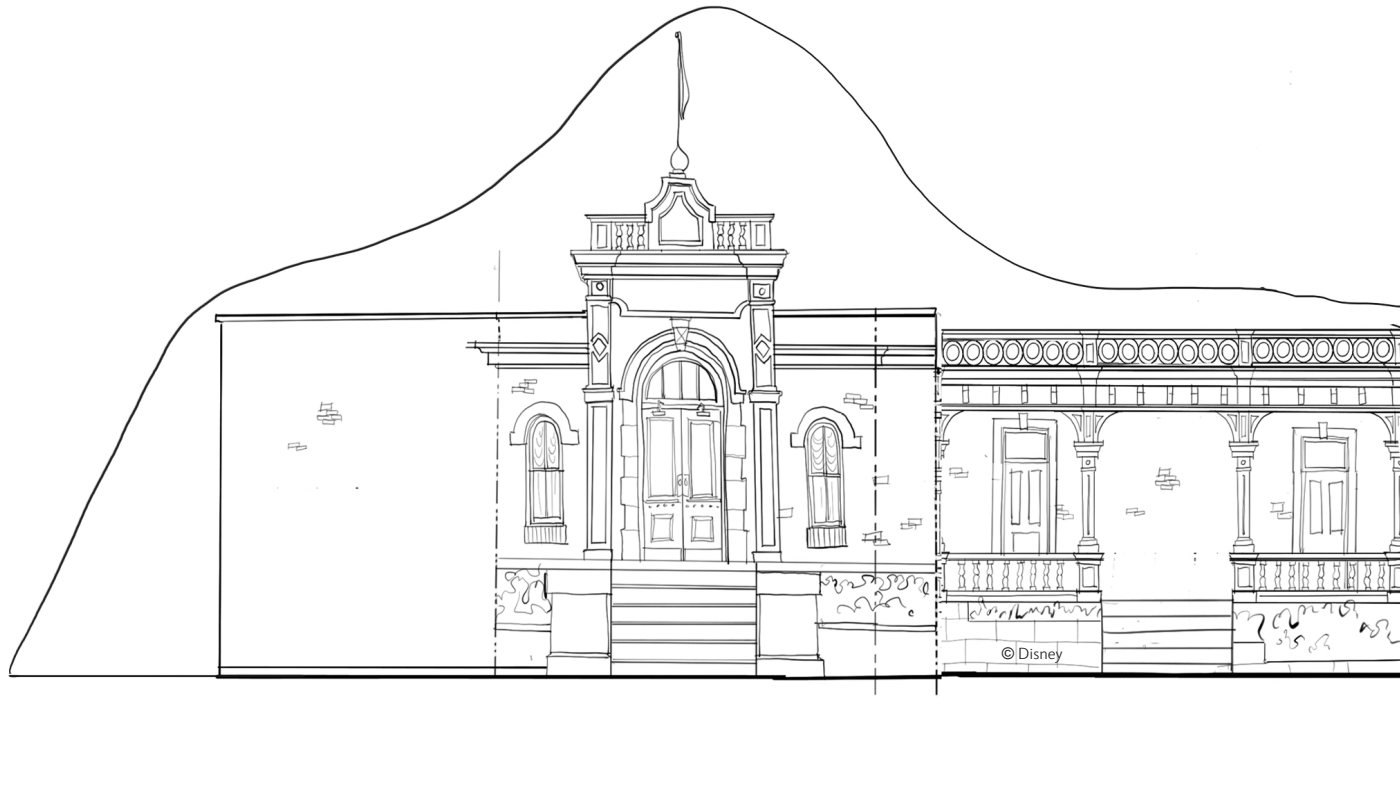


# Disney Paper Parks

#DisneyMagicMoments | #DisneyPaperParks

## TOWN SQUARE - WEST

Sheet Number: 5



Glue or clip to Sheet 6 facade



# Disney Paper Parks

#DisneyMagicMoments | #DisneyPaperParks

## TOWN SQUARE - EAST

Sheet Number: 6





# Disney Paper Parks

#DisneyMagicMoments | #DisneyPaperParks

## TOWN SQUARE - EAST

Sheet Number: 7





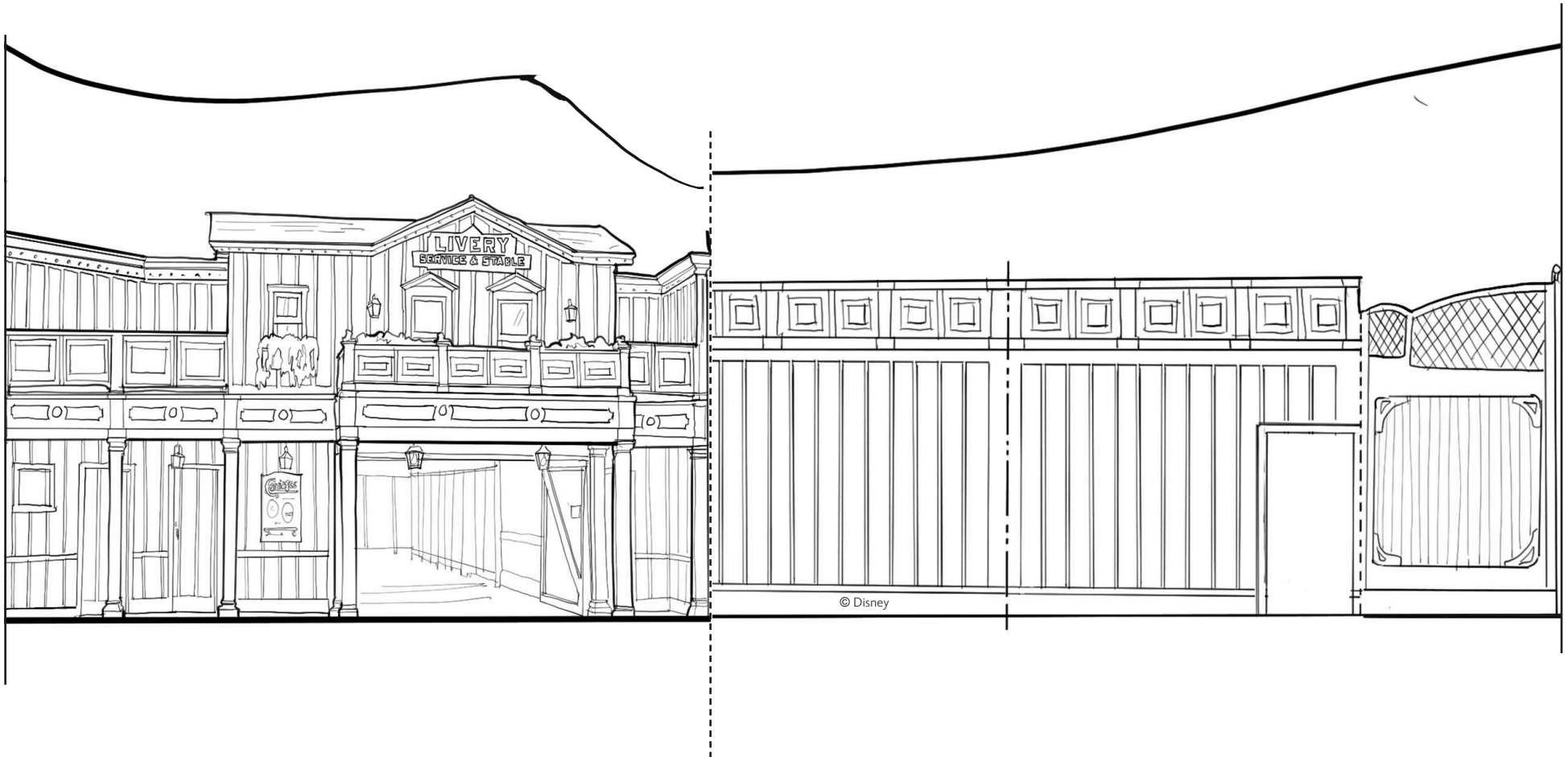
# Disney Paper Parks

#DisneyMagicMoments | #DisneyPaperParks

## TOWN SQUARE - EAST

Sheet Number: 8

Glue or clip to Sheet 7 facade





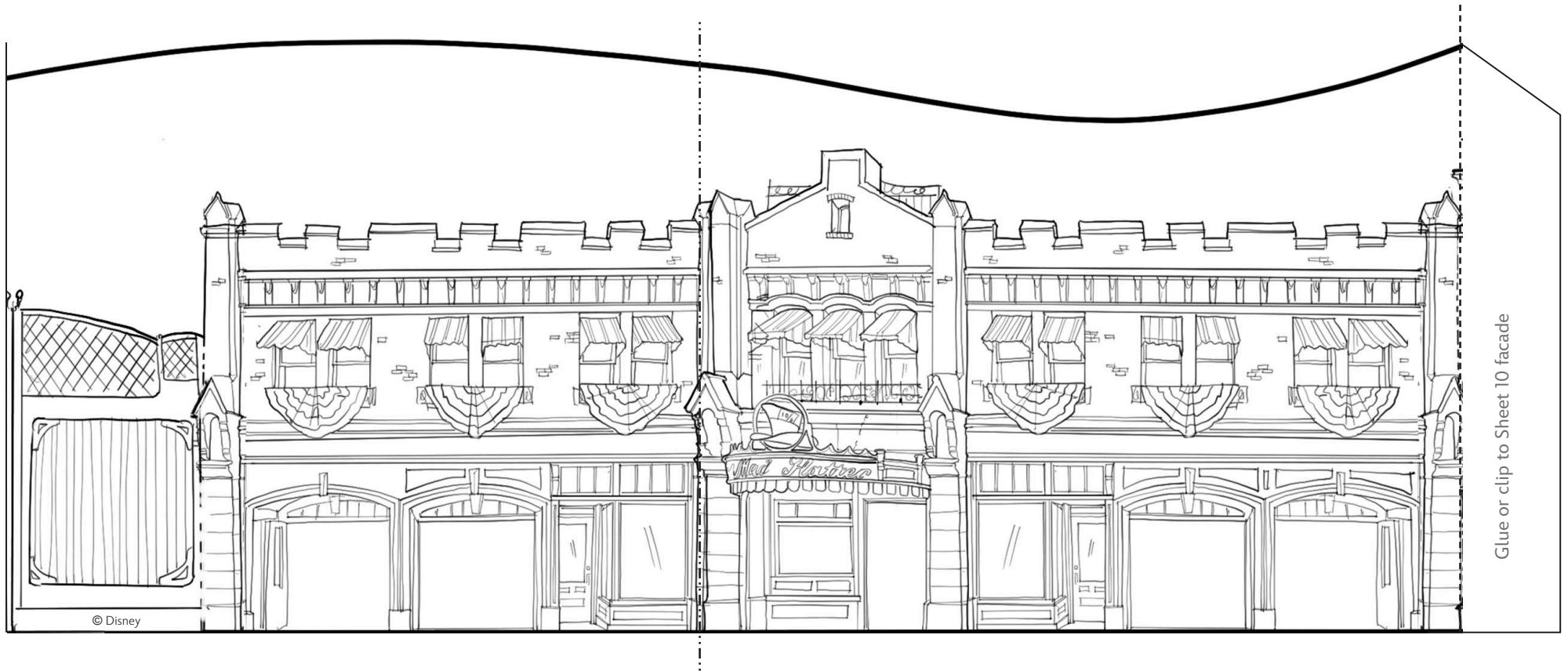


# Disney Paper Parks

#DisneyMagicMoments | #DisneyPaperParks

## TOWN SQUARE - EAST

Sheet Number: 9



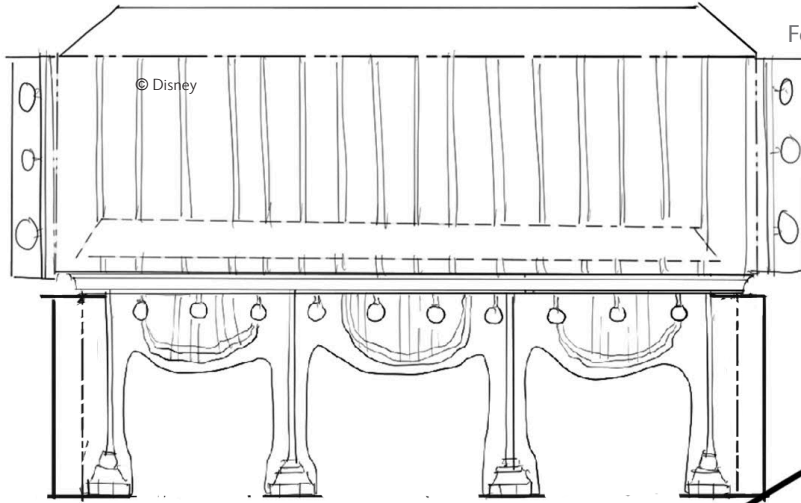


# Disney Paper Parks

#DisneyMagicMoments | #DisneyPaperParks

## TOWN SQUARE - EAST

Sheet Number: 10



Fold tab and glue to Opera House facade along dashed lines



Glue tab to dashed area



Glue or clip to Sheet 9 facade

Glue or clip to Sheet 11 facade

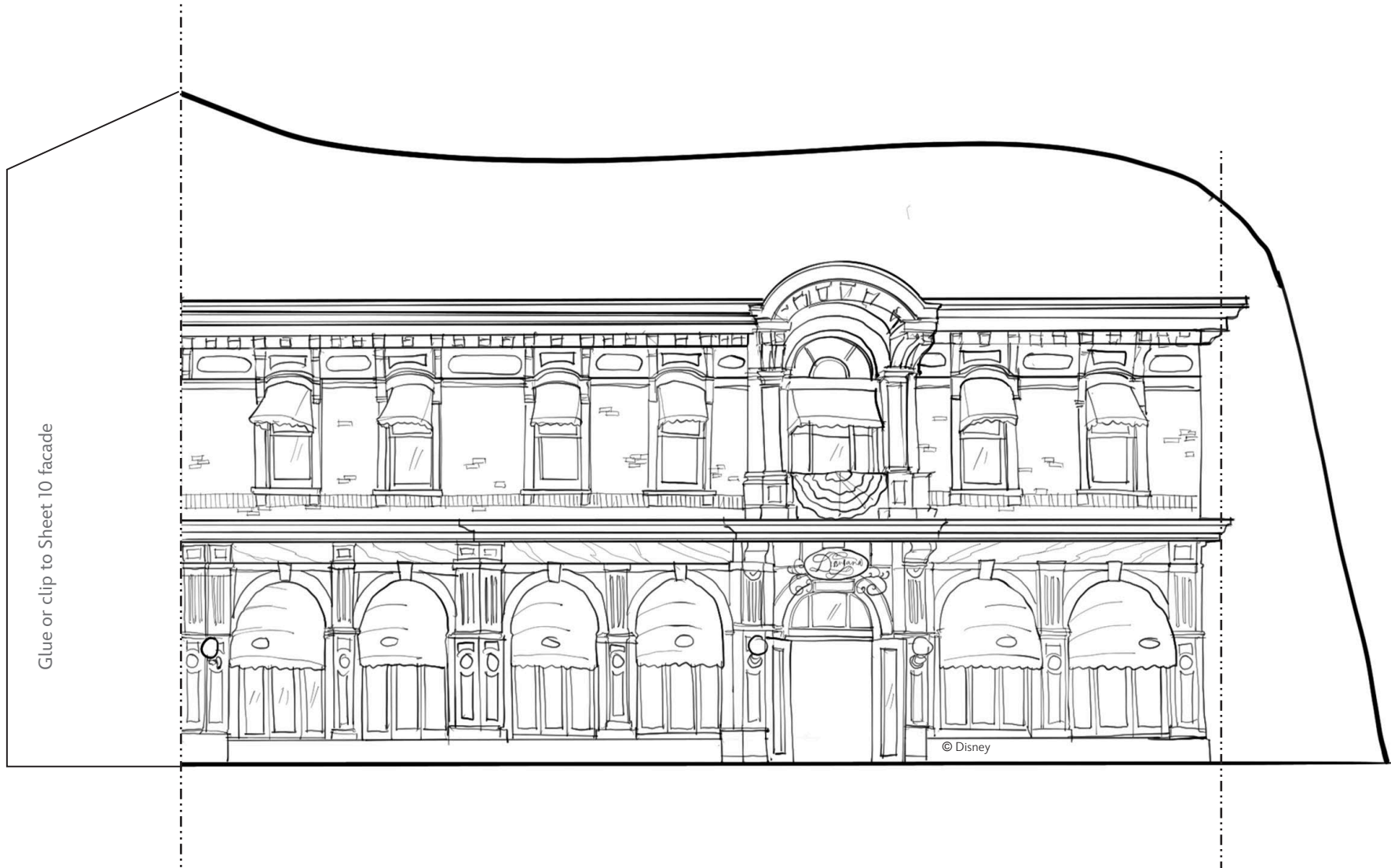


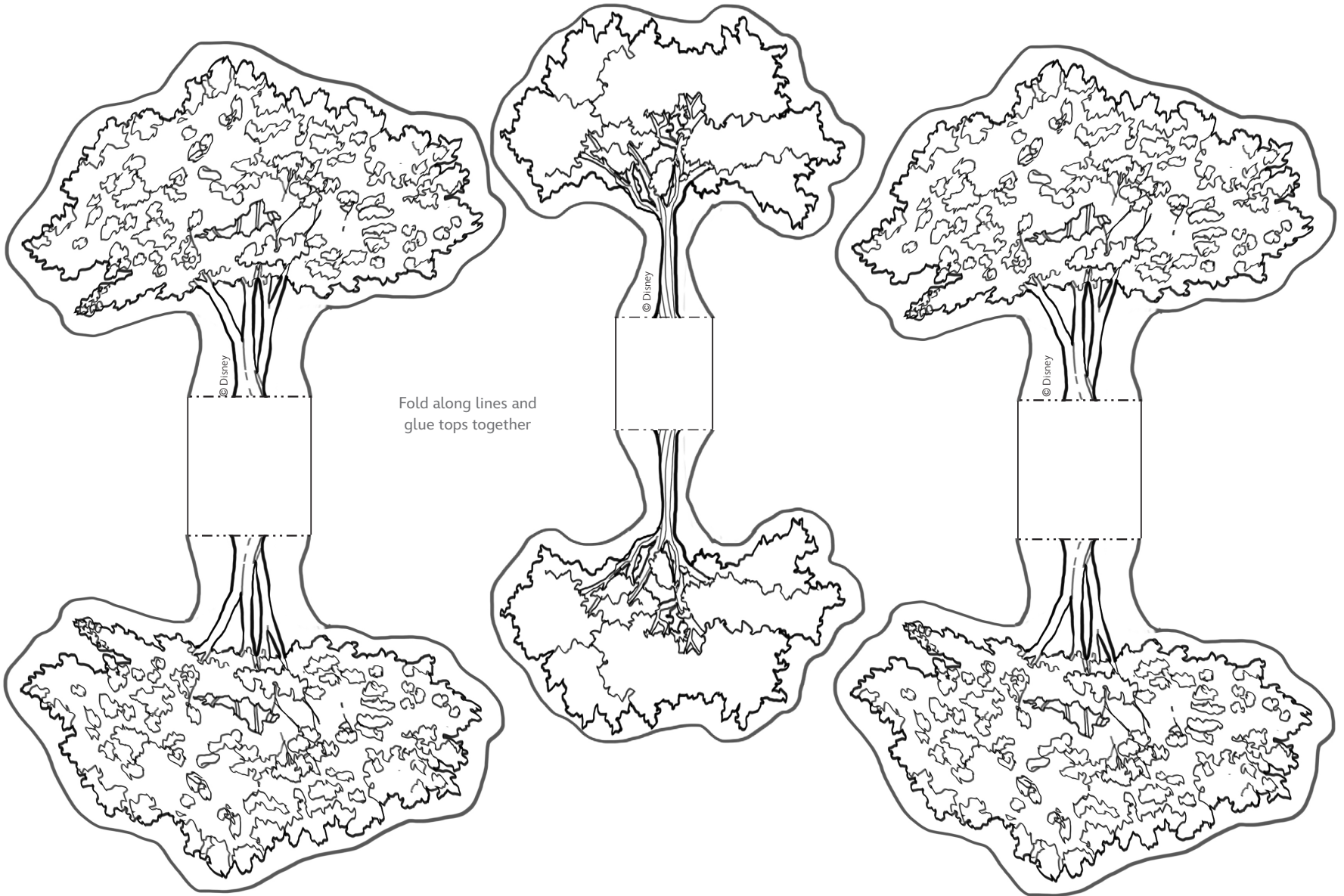
# Disney Paper Parks

#DisneyMagicMoments | #DisneyPaperParks

## TOWN SQUARE - EAST

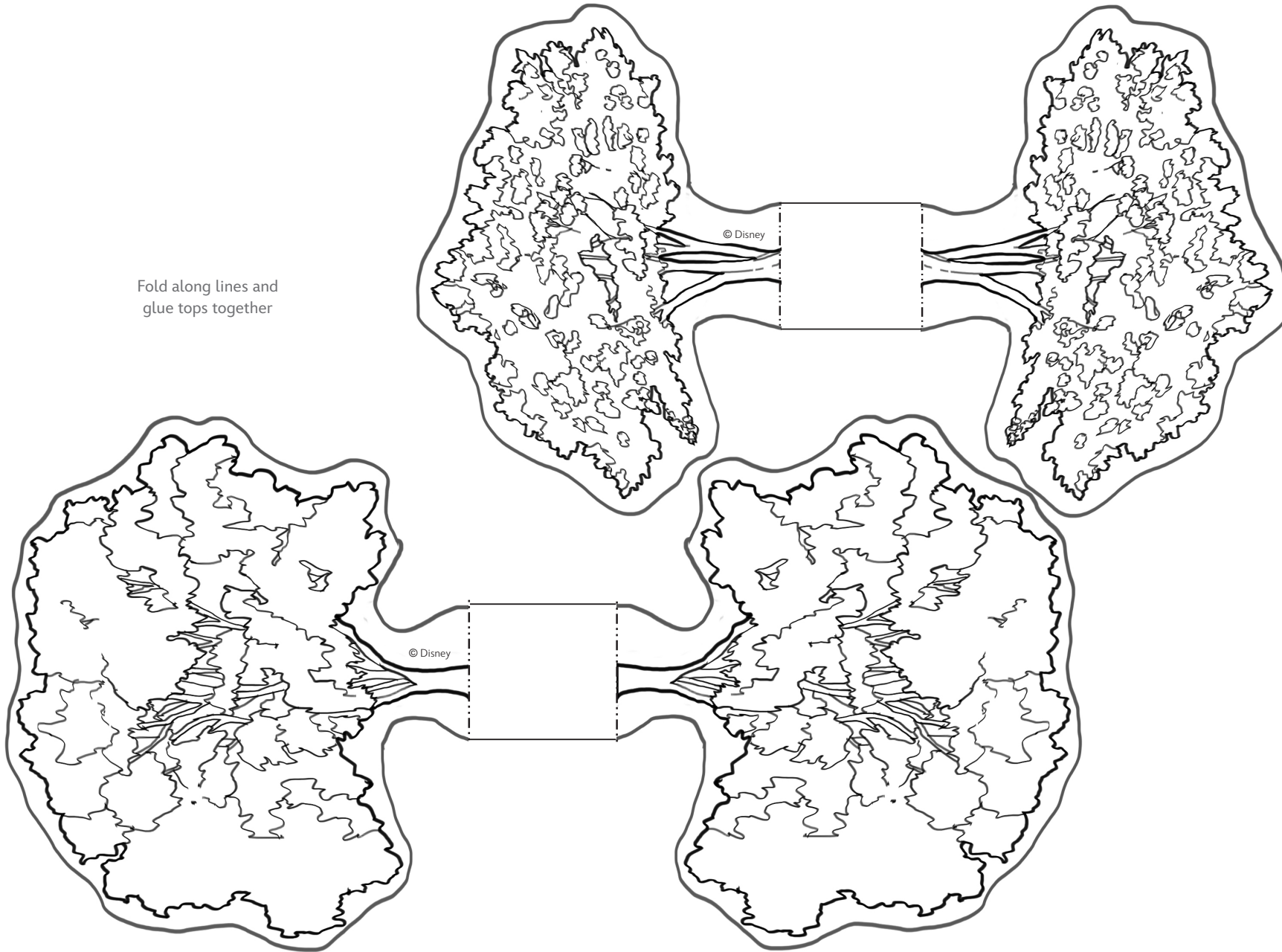
Sheet Number: 11

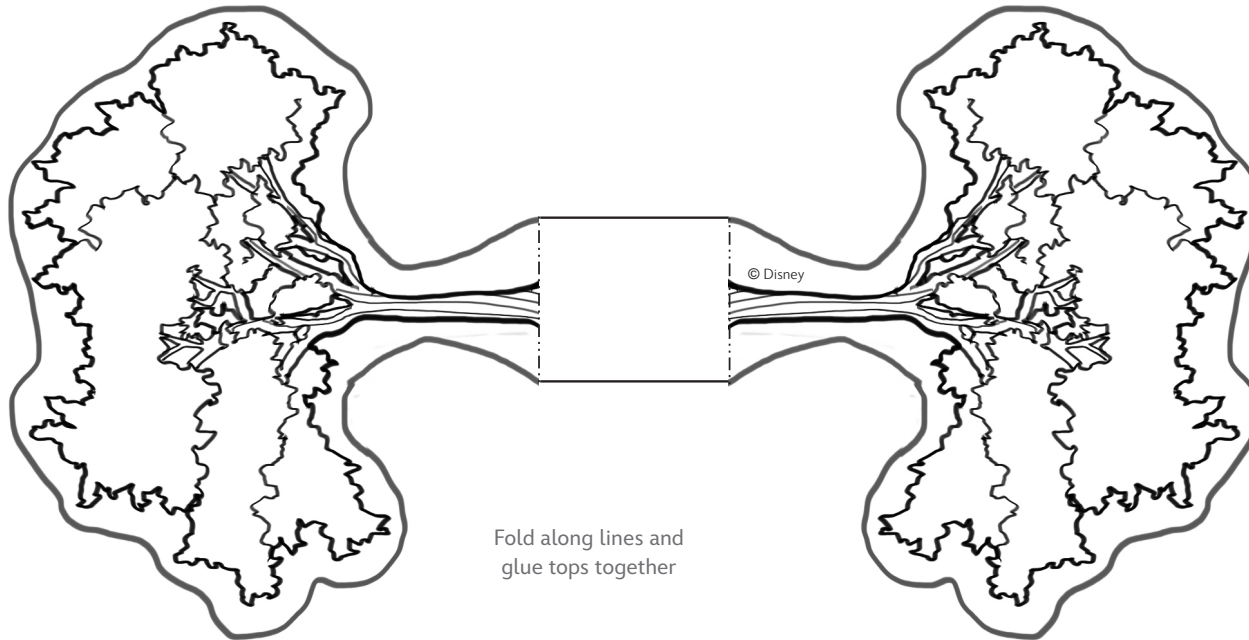




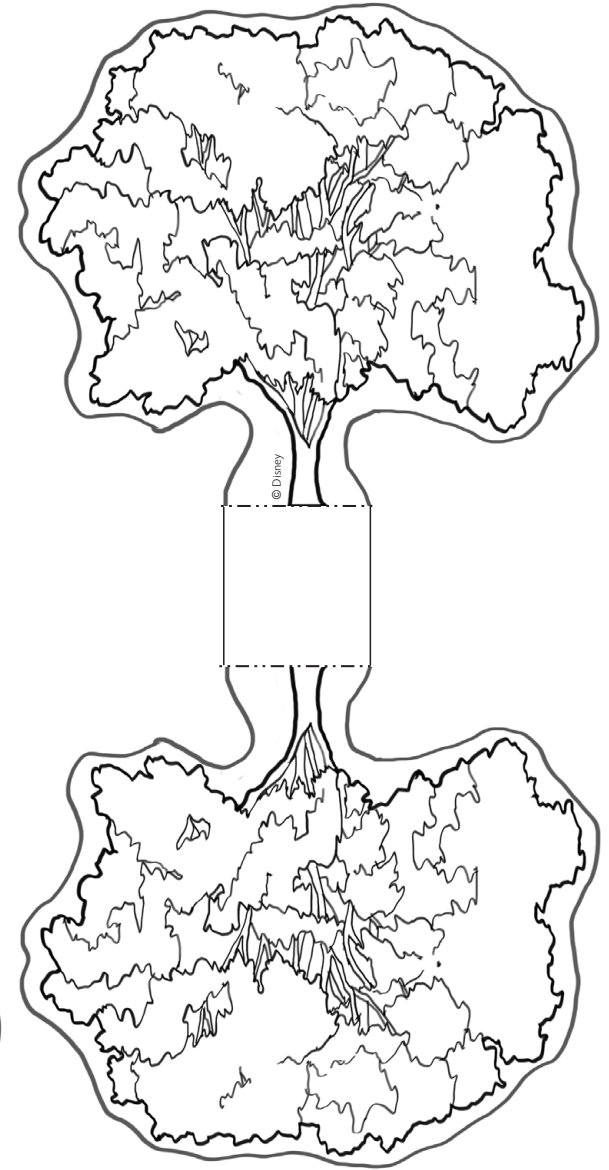
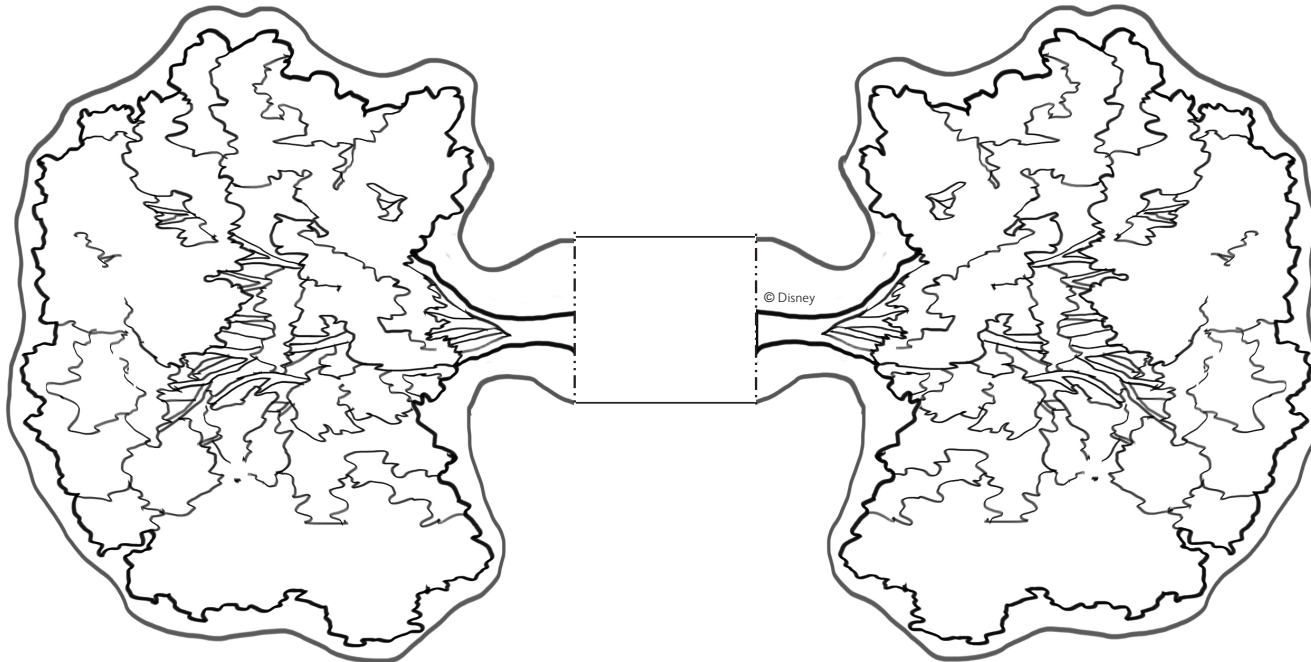


Fold along lines and  
glue tops together





Fold along lines and  
glue tops together





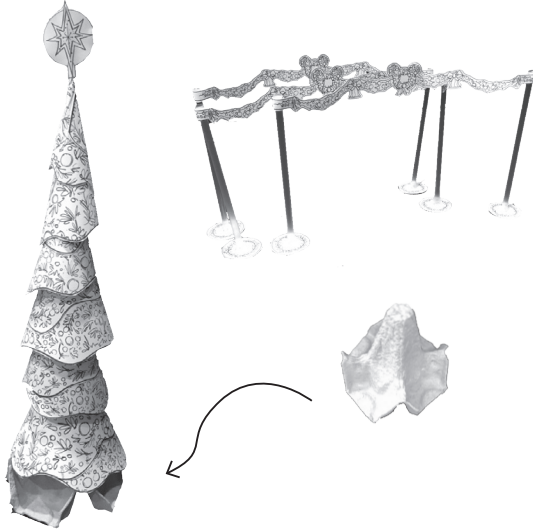
# Disney Paper Parks

#DisneyMagicMoments | #DisneyPaperParks

## MAIN STREET, U.S.A. HOLIDAY DECORATIONS

Sheet Numbers: 15, 16, 17, 18, 19, 20, 21, 22

### INSTRUCTIONS



### MATERIALS



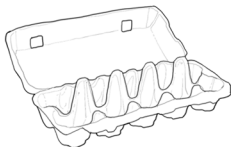
Glue Stick



Scissors



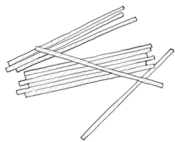
Tape



egg carton



Crayons



straws



wooden Toothpicks

### GUIDE

#### Lines



Valley fold, fold in front



Mountain fold, fold behind



Cut



1. Color the pages with crayons, colored pencils, or whatever you would like to use.
2. Cut along solid lines where indicated.
3. Fold tabs and pieces according to Guide. And see notes on all pages. To assemble the Holiday Tree, cut egg carton for base as shown. Place straw in base and build from the bottom. Assemble pieces as noted in sheets. Starting with piece 6 on the bottom and piece 1 at the top.
4. Assemble popcorn cart as shown in image.
5. For Main Street Holiday Decorations, glue garland to all Disneyland building facades as you like. For lamp posts, fold as shown and glue tips of lamps together at the top.
6. For Mickey Wreath Swags, cut 2 slits in straw end and tape flanges to base as shown in image. Cut top of straw to desired height and wrap swag garland ends around top of straw as shown in image.
7. For American Flag, cut 2 slits in straw end and tape flanges to base as shown in image. Cut top of straw to desired height and wrap the flag tab around top of straw as shown in image. Glue base inside planter as shown.
8. Assemble planter, bench, and fire truck as shown.

Please Note: When cutting with scissors and working with any of the materials listed above, adult participation and supervision is recommended.



# Disney Paper Parks

#DisneyMagicMoments | #DisneyPaperParks

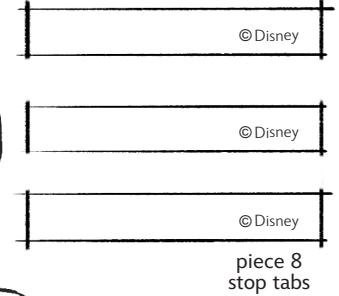
## MAIN STREET, U.S.A. HOLIDAY TREE

Sheet Number: 15

Sheet 1 of 2



These are stop tabs. Wrap around straw to keep cones from falling down the straw. Tip: use tape to secure tabs on straw.



piece 1  
tree top

piece 3  
tree cone

Wrap around to form  
cone shape and align  
with shaded line

piece 2  
tree cone

piece 4  
tree cone

piece 7  
top spacer  
under piece 2

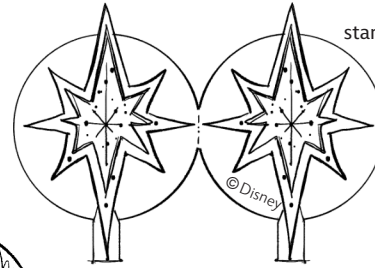
Wrap around to form  
cone shape and align  
with shaded line





Sheet 2 of 2

piece 5  
tree cone

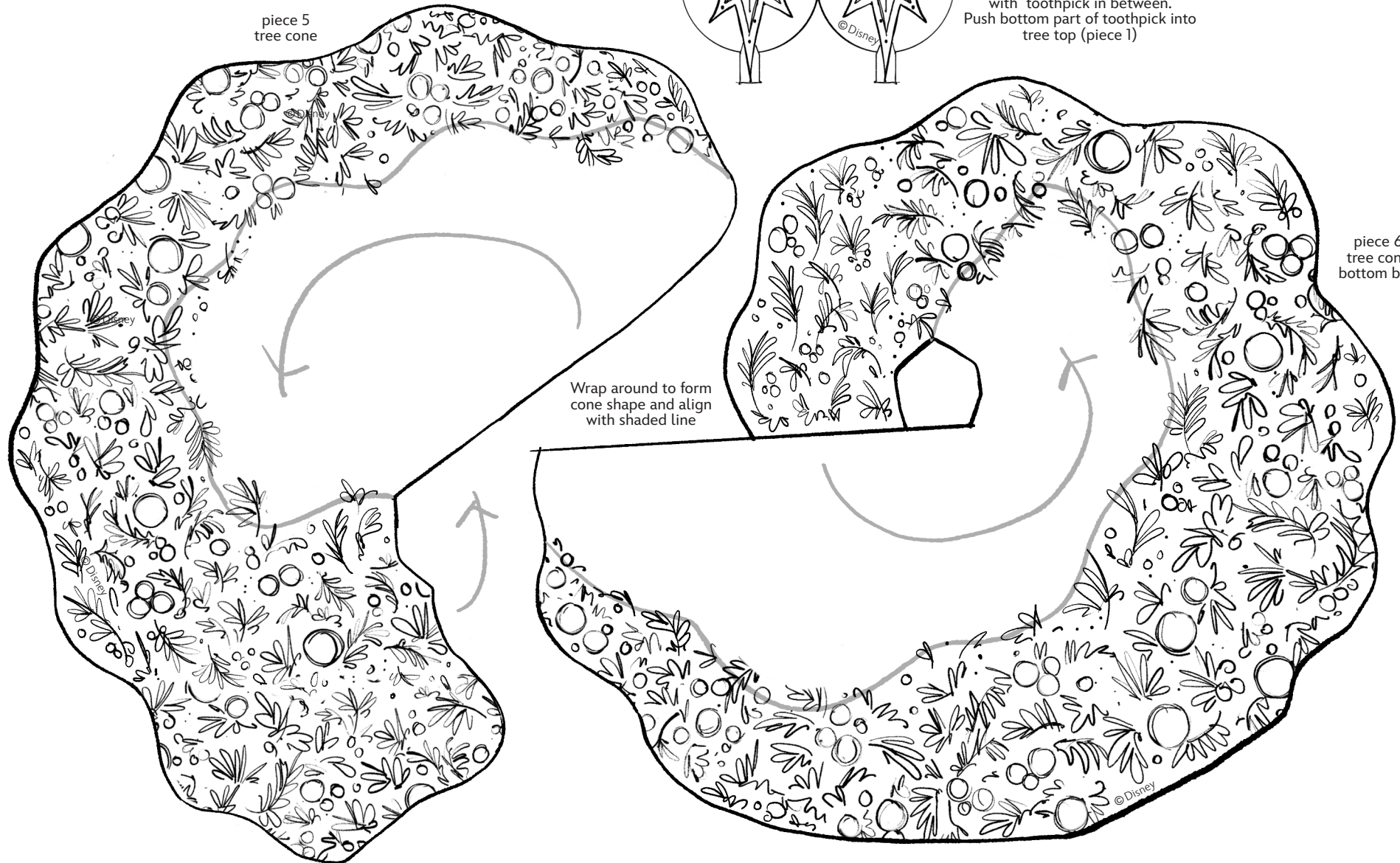


piece 9  
star tree topper

Glue sides together  
with toothpick in between.  
Push bottom part of toothpick into  
tree top (piece 1)

Wrap around to form  
cone shape and align  
with shaded line

piece 6  
tree cone  
bottom base





# Disney Paper Parks

#DisneyMagicMoments | #DisneyPaperParks

## POPCORN CART

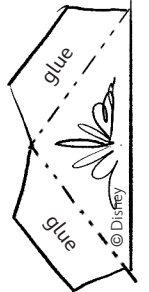
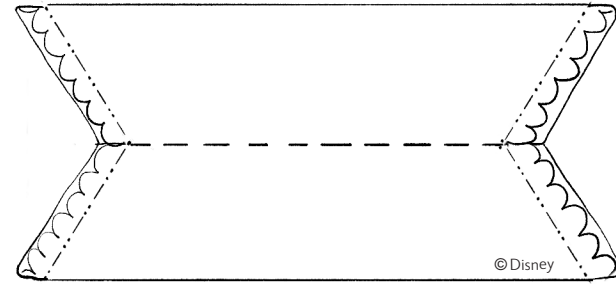
Sheet Number: 17



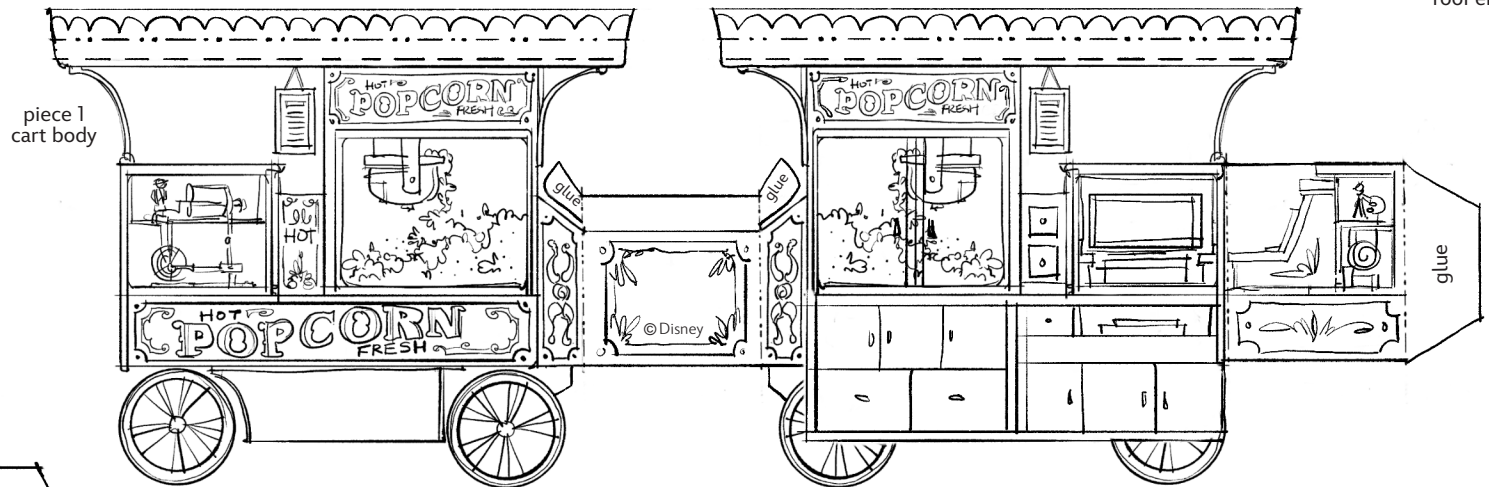
glue to underside of roof ends

piece 2 roof

piece 3 roof end

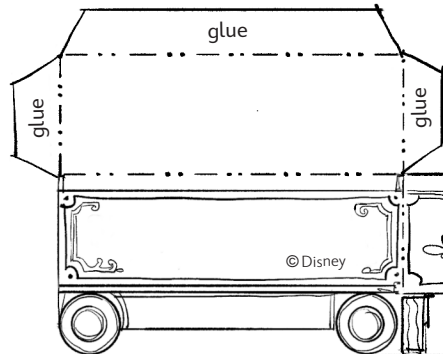


piece 4 roof end



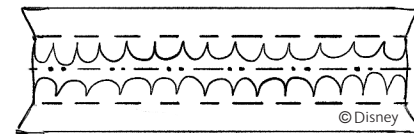
piece 1 cart body

piece 6 beverage cart



glue to top of roof (piece 2)

piece 5 roof cresting



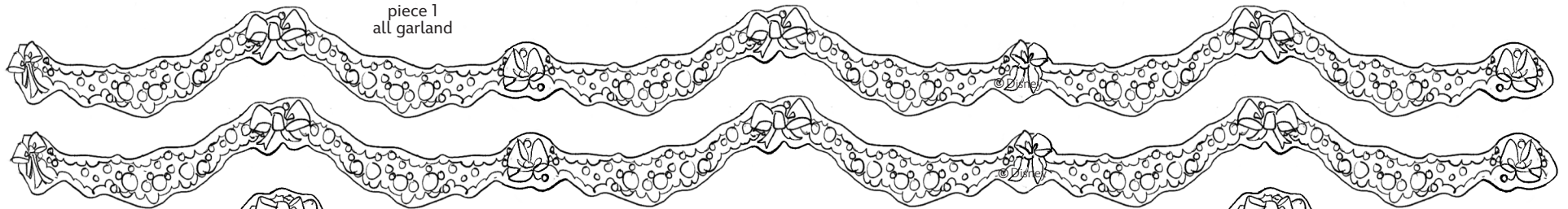


# Disney Paper Parks

#DisneyMagicMoments | #DisneyPaperParks

## MAIN STREET, U.S.A. HOLIDAY DECORATIONS

Sheet Number: 18



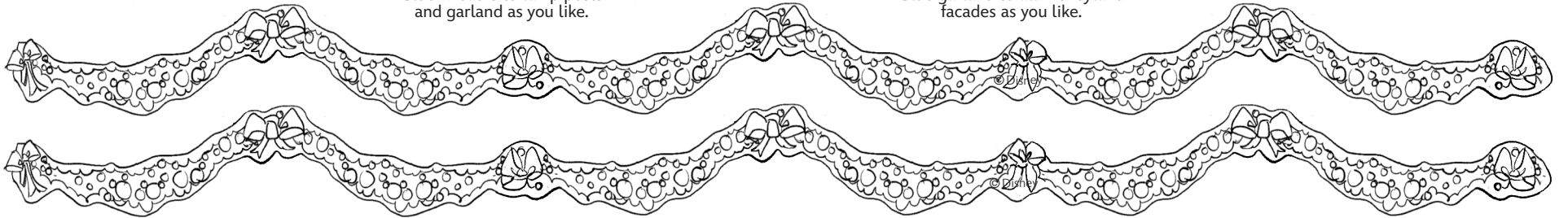
piece 1  
all garland



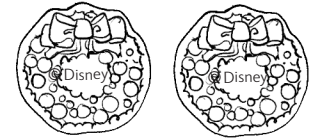
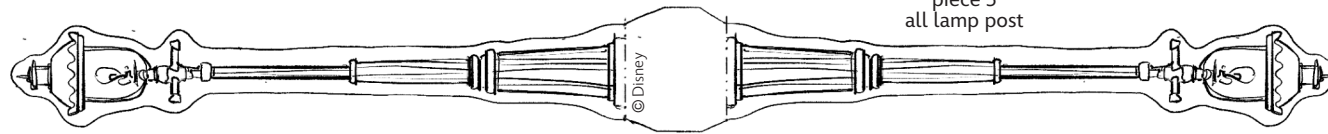
piece 2  
all wreaths

Glue wreaths to lamp posts  
and garland as you like.

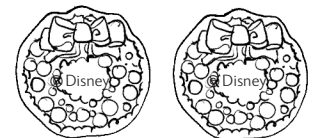
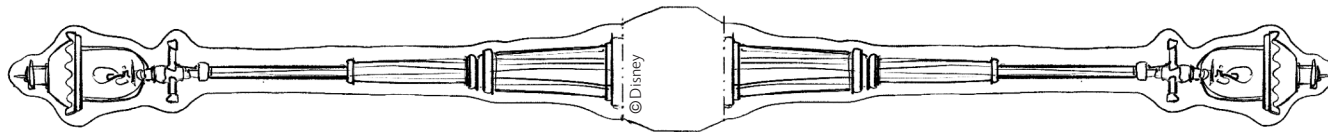
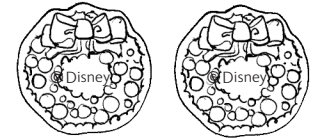
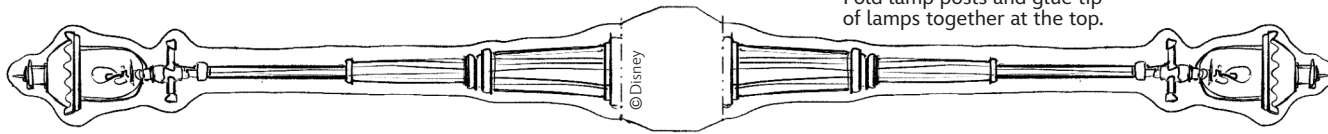
Glue garland to all Disneyland  
facades as you like.



piece 3  
all lamp post



Fold lamp posts and glue tip  
of lamps together at the top.





# Disney Paper Parks

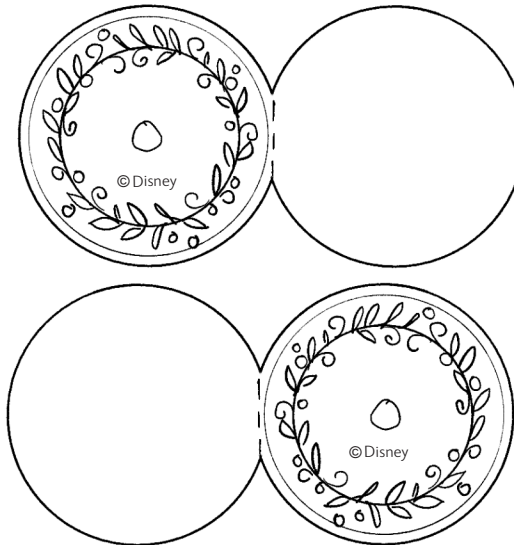
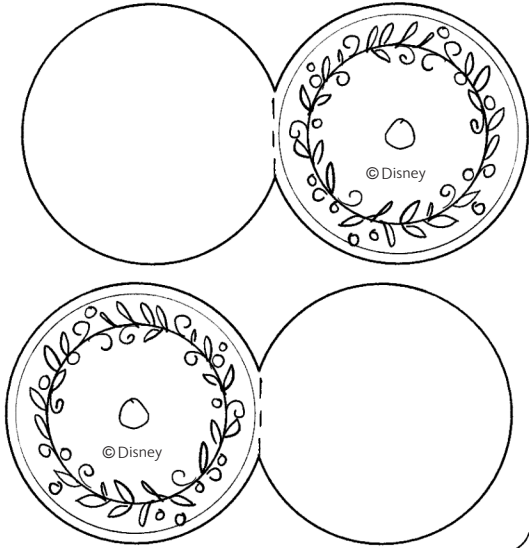
#DisneyMagicMoments | #DisneyPaperParks

## MAIN STREET, U.S.A. HOLIDAY DECORATIONS

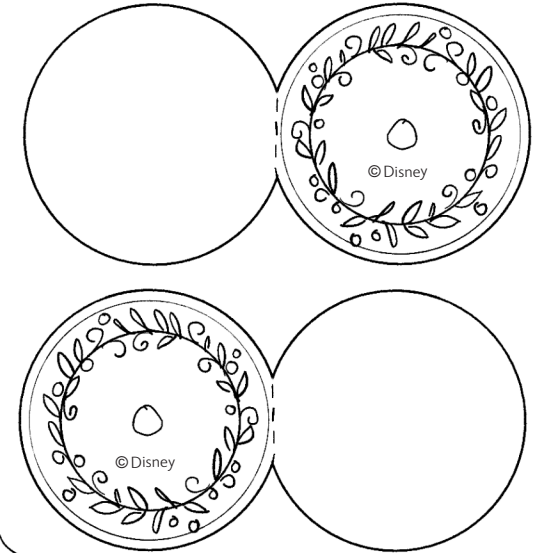
Sheet Number: 19

piece 1  
all post bases

These are support bases for  
Mickey Holiday Decoration  
Swags and Flag Pole.



glue sides together and tape straw ends (cut  
ends, flanged out) to circle area on top.



piece 2  
all Mickey Holiday  
Decoration Swags

glue and wrap  
tab around straw top

glue and wrap  
tab around straw top

glue and wrap  
tab around straw top

glue and wrap  
tab around straw top

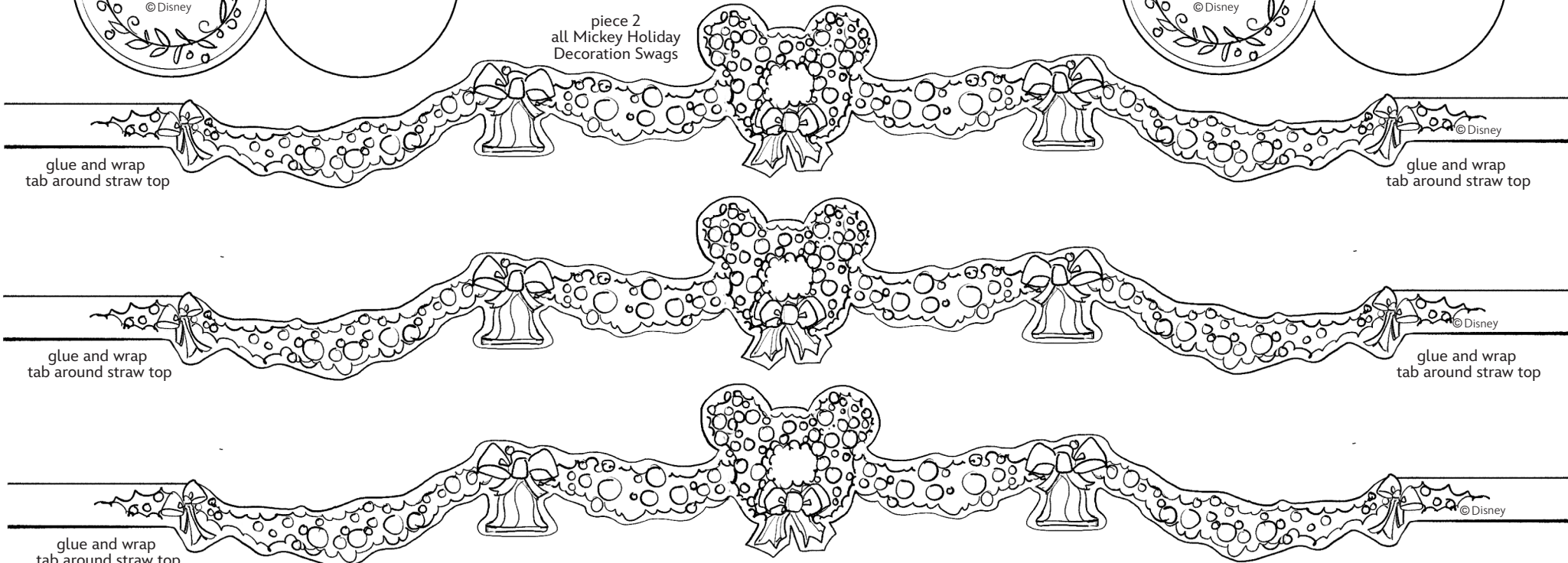
glue and wrap  
tab around straw top

© Disney

© Disney

© Disney

© Disney





# Disney Paper Parks

#DisneyMagicMoments | #DisneyPaperParks

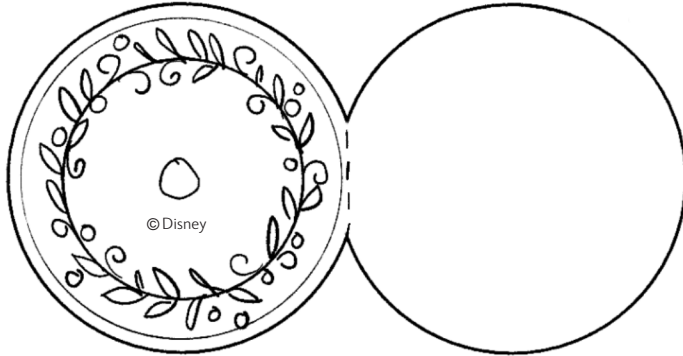
## FLAG POLE AND BENCH

Sheet Number: 20

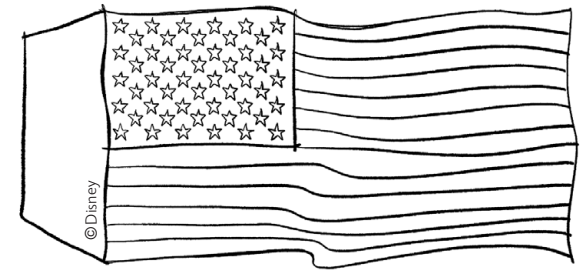


decorate the facades any way you like!

piece 1  
all post bases

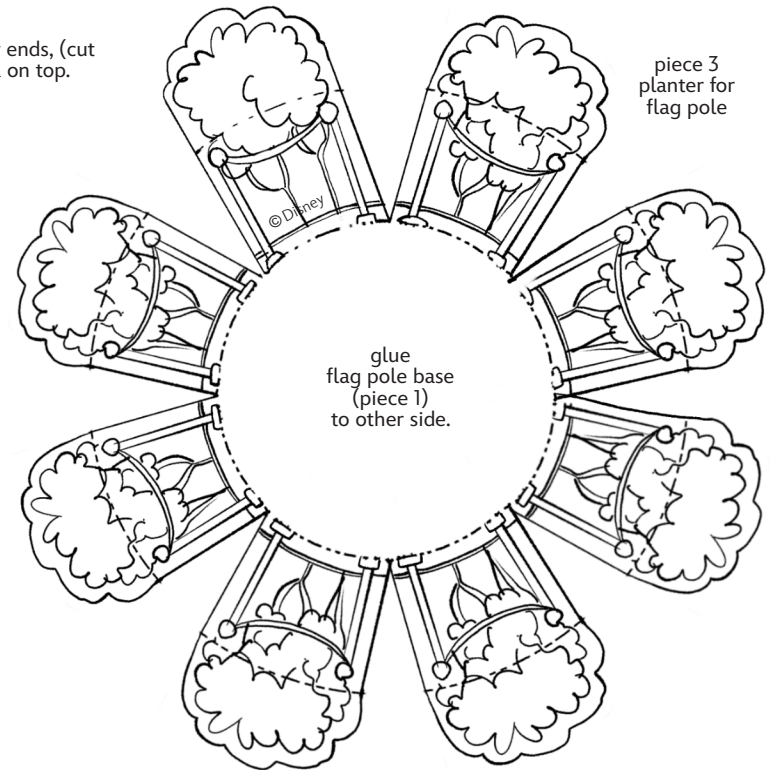


piece 2  
American Flag

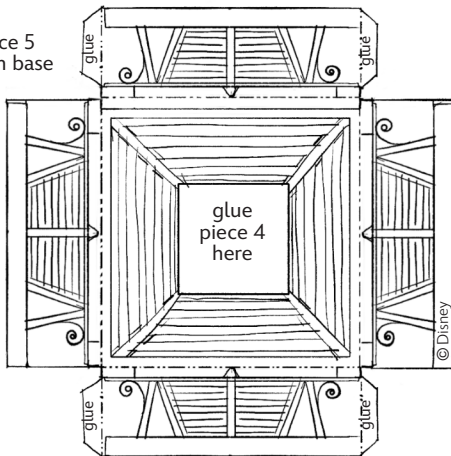


glue sides together and tape straw ends, (cut ends, flanged out) to circle area on top.

piece 3  
planter for  
flag pole



piece 5  
bench base



piece 4  
bench  
seat back



glue  
flag pole base  
(piece 1)  
to other side.

glue  
to  
piece 5

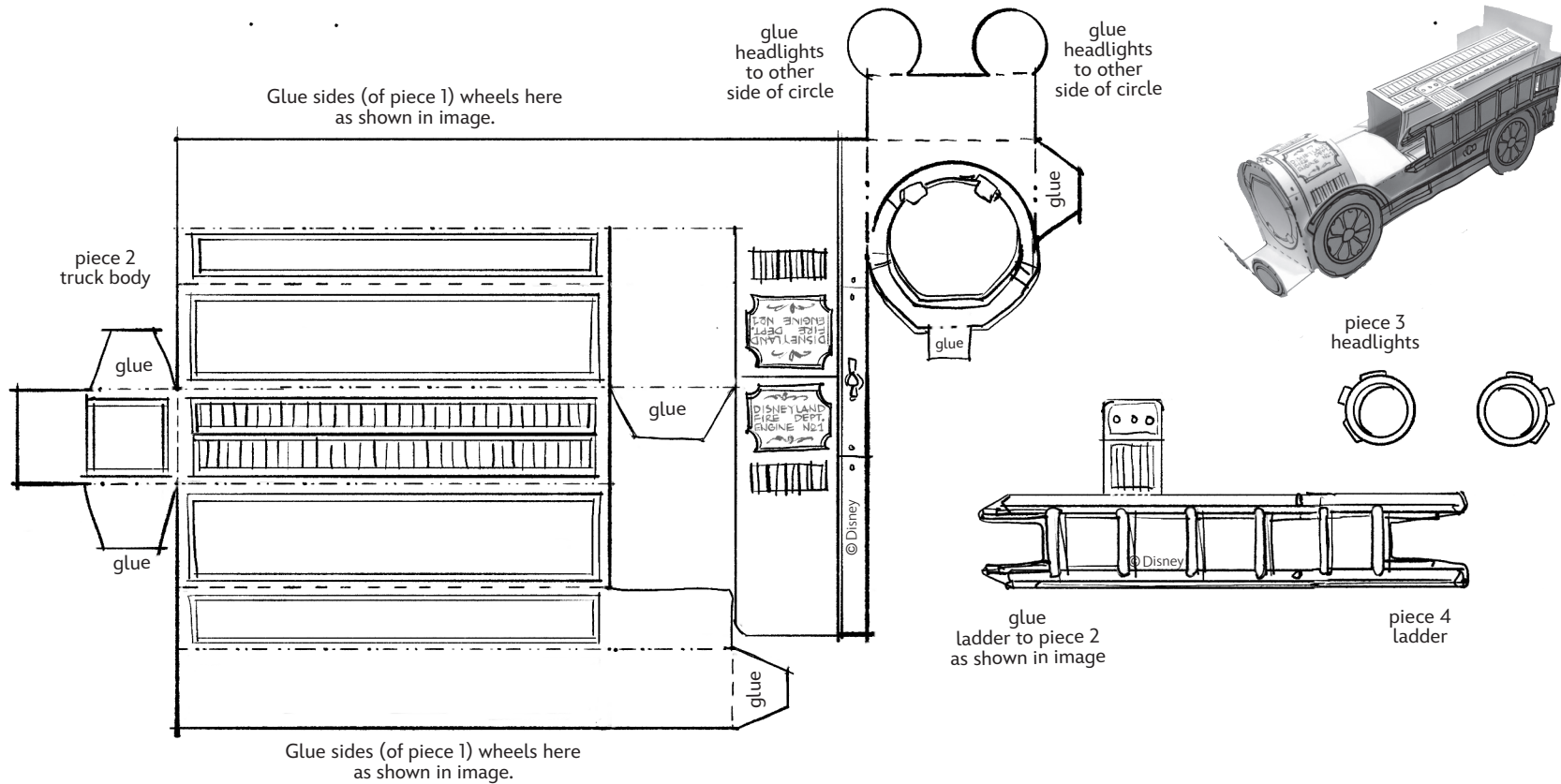
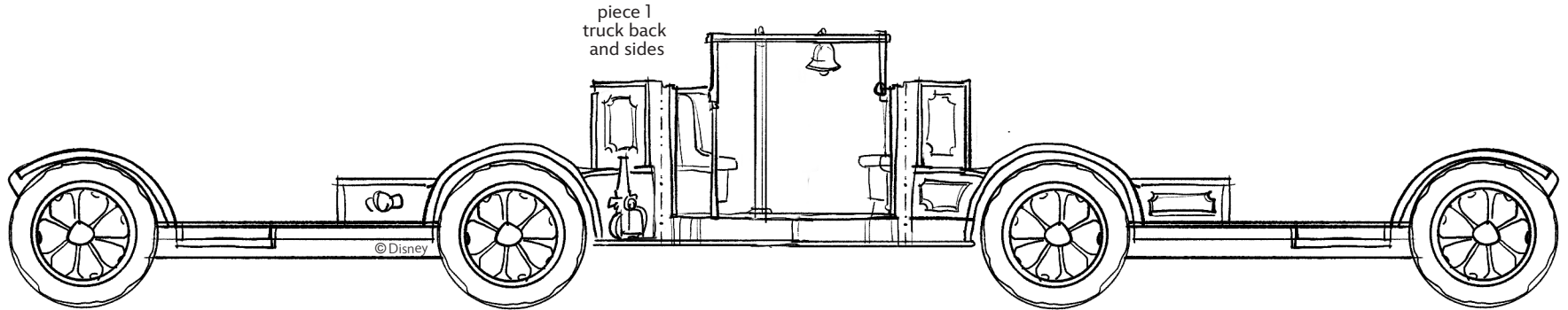


# Disney Paper Parks

#DisneyMagicMoments | #DisneyPaperParks

## DISNEYLAND FIRE ENGINE

Sheet Number: 21





# Disney Paper Parks

#DisneyMagicMoments | #DisneyPaperParks

## PRESENTS

Sheet Number: 22

